

# CUTANEOUS MANIFESTATIONS OF COVID-19

Mansour Nassiri Kashani,

MD., Prof. of Dermatology

Center for Research and Training in Skin Diseases and Leprosy(CRTSDL),  
Tehran University of Medical Sciences (TUMS)



TEHRAN UNIVERSITY  
OF  
MEDICAL SCIENCES



# Introduction

- In December 2019, a pneumonia of unknown cause was detected in Wuhan, China.
- It was later disclosed that the new (novel) type of corona virus causes respiratory disease spreading from person-to-person.
- With the current global pandemic, dermatologists, like all physicians, should be aware of COVID-19 infection and any skin manifestations.



# **CLASSIFICATION OF THE CUTANEOUS MANIFESTATIONS OF COVID-19**



**Janunide® / Januheal®**



# CLASSIFICATION OF THE CUTANEOUS MANIFESTATIONS OF COVID-19: A RAPID PROSPECTIVE NATIONWIDE CONSENSUS STUDY IN SPAIN WITH 375 CASES.

Supplementary material: Photographic atlas

C. Galván Casas\*, A. Català\*, G. Carretero Hernández, P. Rodríguez-Jiménez, D. Fernández Nieto, A. Rodríguez-Villa Lario, I. Navarro Fernández, R. Ruiz-Villaverde, D. Falkenhain, M. Llamas Velasco, J. García-Gavín, O. Baniandrés, C. González-Cruz, V. Morillas-Lahuerta, X. Cubiró, I. Figueras Nart, G. Selda-Enriquez, J. Romani, X. Fustà-Novell, A. Melian-Olivera, M. Roncero Riesco, P. Burgos-Blasco, J. Sola Ortigosa, M. Felto Rodriguez, I. García-Doval

British Journal of Dermatology 2020

©This material is subject to copyright (19th April 2020). Patients  
have authorized the reproduction for research and teaching.  
Any other use is forbidden.

Janunide® / Januheal®



# Pseudo-chilblain

- Acral areas of erythema-oedema with some vesicles or pustules.
- Purpuric areas, affecting hands and feet.
- Usually asymmetric.



Janunide® / Januheal®





# Pseudo-chilblain – Confirmed cases



Janunide® / Januheal®

# Pseudo-chilblain – Confirmed cases





# Pseudo-chilblain – Confirmed cases



Janunide® / Januheal®



# Pseudo-chilblain – Confirmed cases



Janunide® / Januheal®



# Pseudo-chilblain – Confirmed cases



Janunide® / Januheal®



# Pseudo-chilblain – Confirmed cases



Janunide® / Januheal®

# Vesicular Eruption

- Some presented on the trunk and consisted of small monomorphic vesicles (unlike polymorphic vesicles in chickenpox).
- They may also affect the limbs, have haemorrhagic content, and become larger or diffuse.





# Vesicular Eruption Confirmed cases



# Vesicular Eruption – Confirmed cases





# Vesicular Eruption – Confirmed cases



# Vesicular Eruption – Confirmed cases



Janunide® / Januheal®





# Vesicular Eruption – Suspected cases



# Urticarial Eruption

- Urticarial lesions mostly distributed in the trunk or disperse.
- A few cases were palmar.
- Urticaria as 1<sup>st</sup> presentation
- General weakness, pyrexia and urticaria.
- A recent survey of Belgian dermatologists revealed an actual increasing incidence of (giant) urticaria and (urticarial) vasculitis.
- Urticaria patients can unknowingly infect others and contribute to the spread of the COVID-19 infection, hence their necessary isolation.



# Urticarial Eruption – Confirmed cases





# Urticarial Eruption – Confirmed cases





# Urticarial Eruption – Confirmed cases



# Urticarial Eruption – Suspected cases



Janunide® / Januheal®





# Classification of skin Manifestations

- 4.- Other maculopapules (47%).
- Perifollicular distribution and varying degrees of scaling.
- Similar to pityriasis rosea.
- Purpura, either punctiform or on larger areas.
- Infiltrated papules in the extremities, mostly dorsum of the hands, look pseudovesicular or resemble erythema elevatum diutinum or erythema multiforme.



# Maculopapular eruption – Confirmed cases

- Pityriasis rosea-like
- Perifollicular eruption
- Bilateral axillary purpuric eruption
- Erythema multiforme-like
- Pseudovesicular or resembling erythema elevatum diutinum
- Purpuric eruptions
- Bilateral axillary purpuric eruption
- Morbilliform eruptions





# Pityriasis rosea-like



Janunide® / Januheal®



# Pityriasis rosea-like



Janunide® / Januheal®



# Perifollicular eruption



Janunide® / Januheal®





# Perifollicular eruption



# Erythema multiforme-like



Janunide® / Januheal®



# Pseudovesicular or resembling erythema elevatum diutinum





# Pseudovesicular or resembling erythema elevatum diutinum



Janunide® / Januheal®

# Purpuric eruptions





# Bilateral axillary purpuric eruption



Janunide® / Januheal®



# Morbilliform eruptions



# Palmar erythema

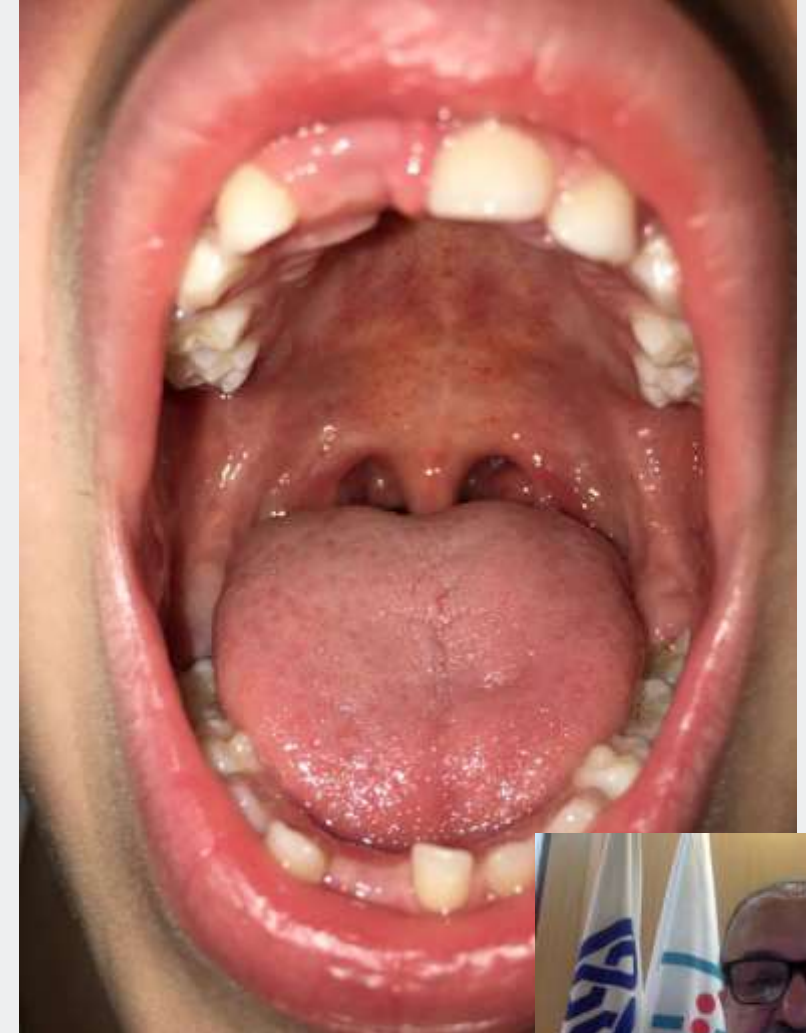


Janunide® / Januheal®





# Enanthem



Janunide® / Januheal®



# Livedoid or necrotic lesions - Confirmed cases



- Livedo or necrosis. These patients showed different degrees of lesions suggesting occlusive vascular disease, including areas of truncal or acral ischemia.



# Livedoid or necrotic lesions - Confirmed cases



Janunide® / Januheal®





# Livedoid or necrotic lesions - Confirmed cases





# Conclusions

- It should be warned clinicians that urticaria with pyrexia in the current context of COVID-19 pandemic can be the first manifestations of this infection, even without any respiratory symptoms.
- Clinicians should be aware of these skin symptoms to optimize COVID-19 detection and quarantine procedures.
- Infection with COVID-19 may result in dermatological manifestations with various clinical presentations, which may aid in the timely diagnosis of this infection.
- It is likely that this will not be the last pandemic we encounter, and strategies that may be proven effective for COVID-19 may inform our future approach in unexpected disasters that we hope will never come to pass.



# THANK YOU FOR YOUR ATTENTION



W W W . A R G A N O . I R



TEHRAN UNIVERSITY  
OF  
MEDICAL SCIENCES

