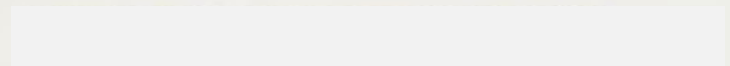


بنام خداوند جان و خرد



Stainless Steel Crowns



? Stainless Steel Crowns

Failure rates

- 14% SSC
- 35.5% Am.
- 25.8% GI
- 29.1% ART

SSC failure.....

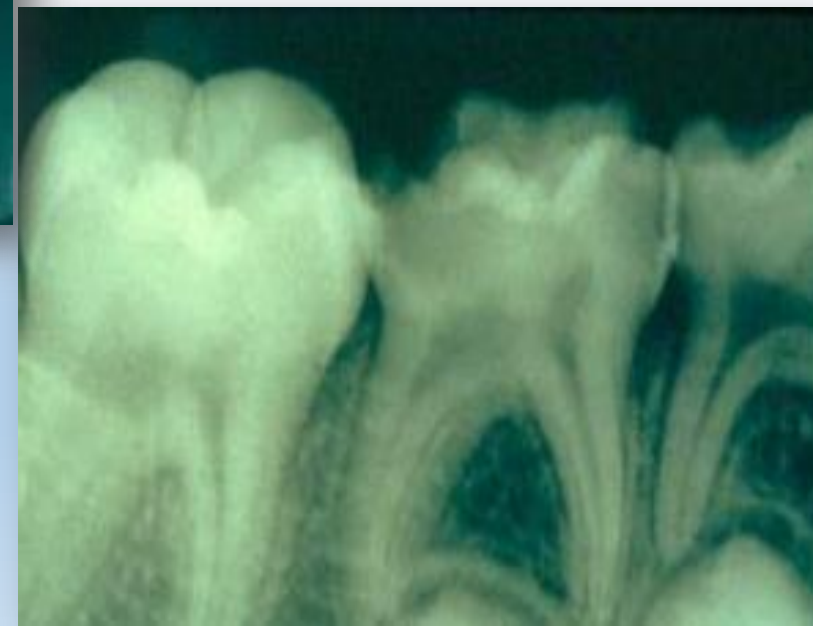
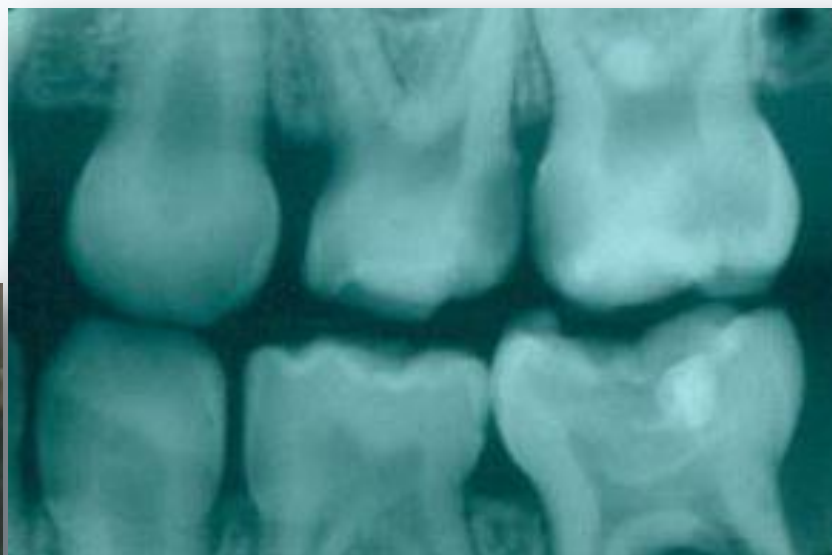


Advantages of Stainless Steel Crowns

- Can be used for badly broken down crowns
- Can be placed with poor isolation
- Fast
- Economical
- Full coverage-prevents recurrent decay
- Durable

Indications of S.S. Crowns

Primary & permanent molars requiring large multisurface restoration



Children with rampant caries



Teeth after pulptherapy



Teeth with developmental defects



Fractured primary molars



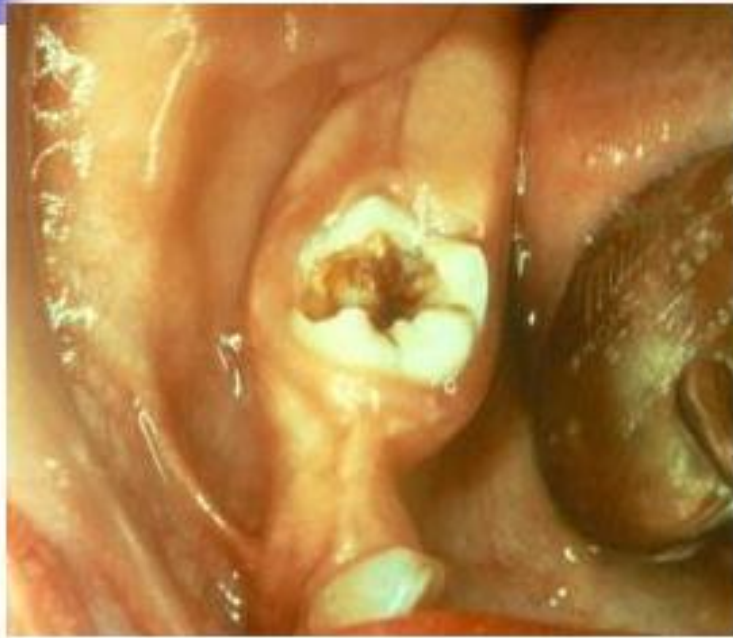
As an abutment for space maintainer



Children with bruxism



Indications: Permanent Teeth



Large, Deep Caries



Enamel Hypoplasia

Restoration of hypoplastic young permanent molars



Reasons Given for Not Placing Stainless Steel Crowns

- Time Consuming to Fit
- Difficult to Manipulate
- Expensive

ugly

Stainless Steel Crowns are
Fast!!!



Stainless Steel Crowns are just as easy to manipulate as a matrix band!

Stainless Steel Crowns are Economical

- You decide the fee
- Best chance of one appointment treatment.

Metal Allergy

Gingival Health

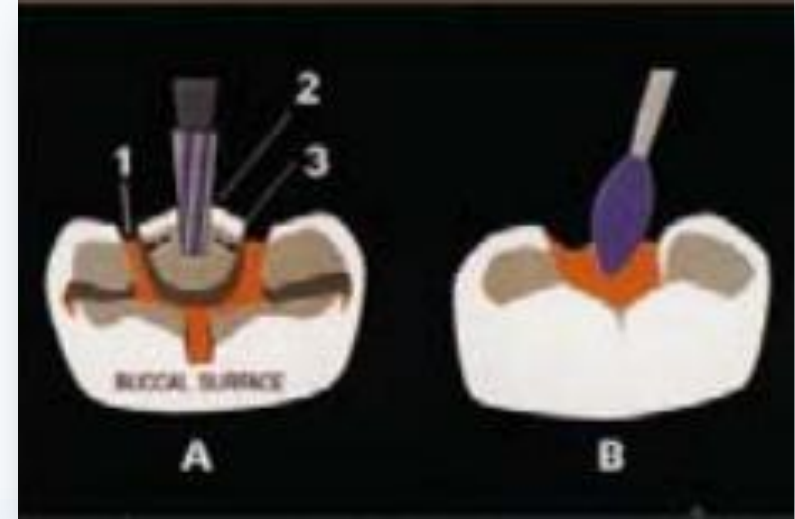
Stainless steel crown technique



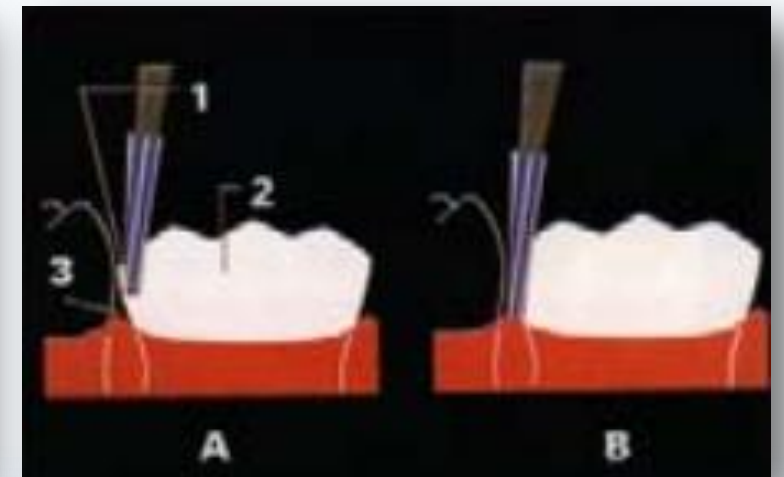
Local analgesia and rubberdam

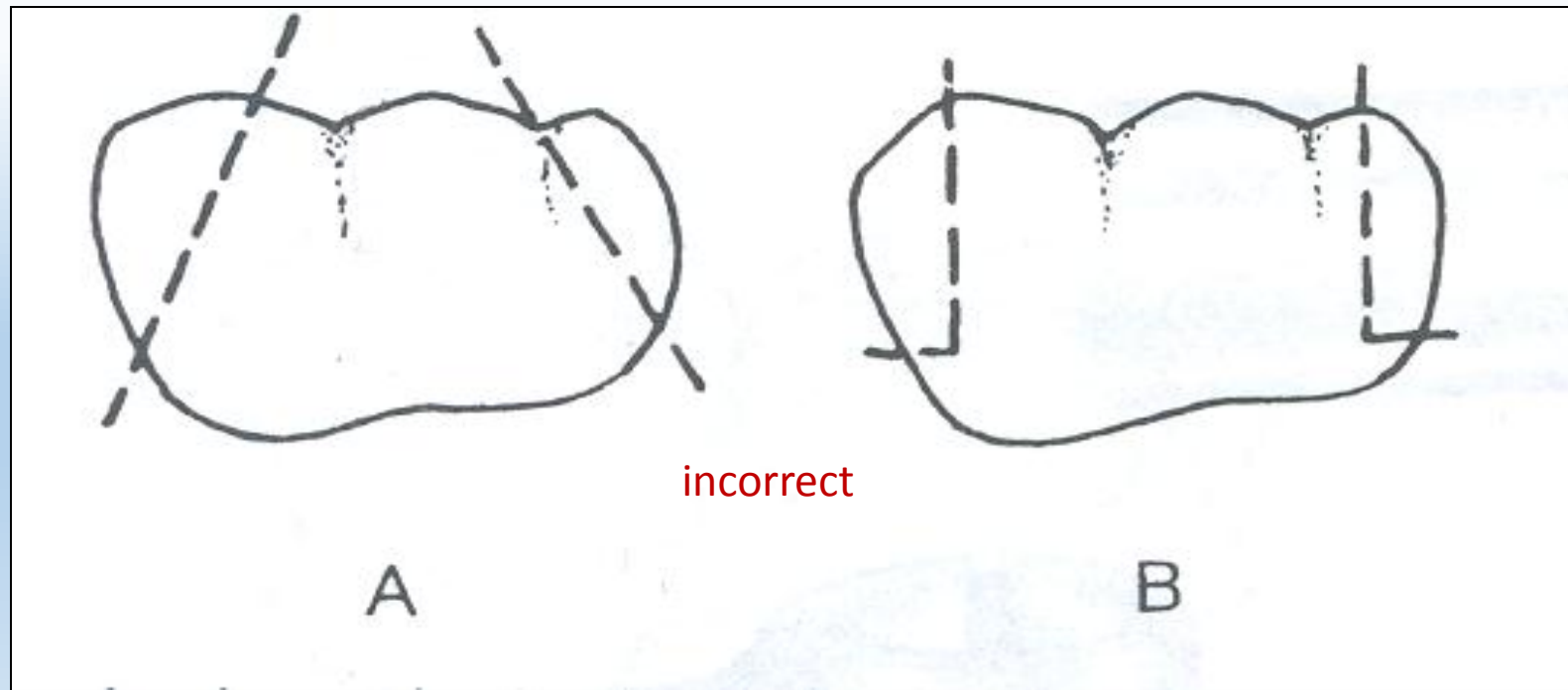
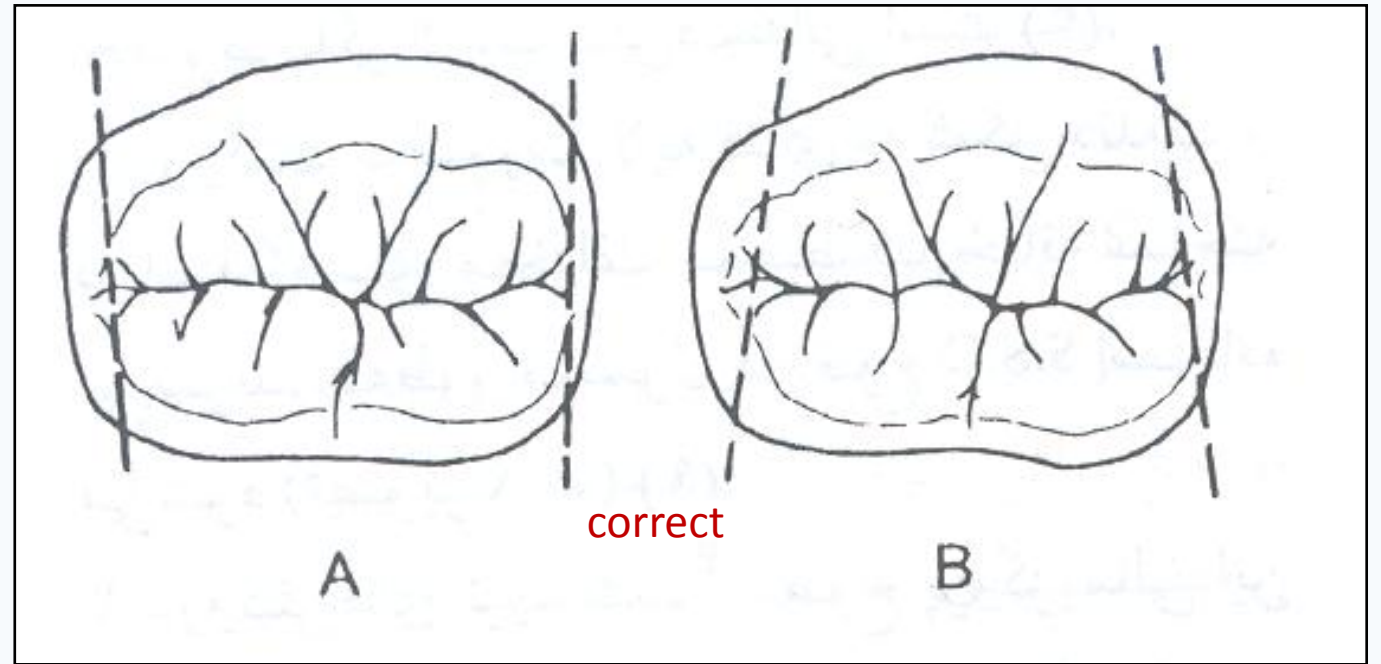


Reduction of occlusal height



Reduction of mesial and distal proximal surface





Round – off sharp edges and make a final check of the preparation



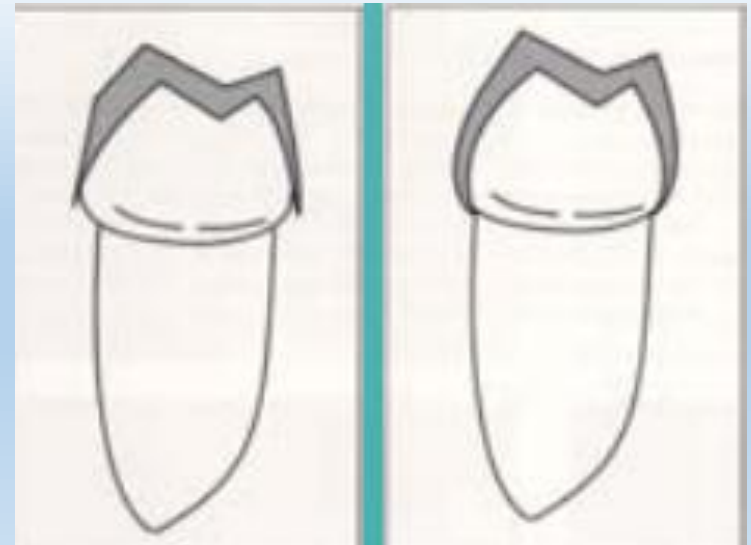
Select a crown for a trial fit



Adjust the crown if required



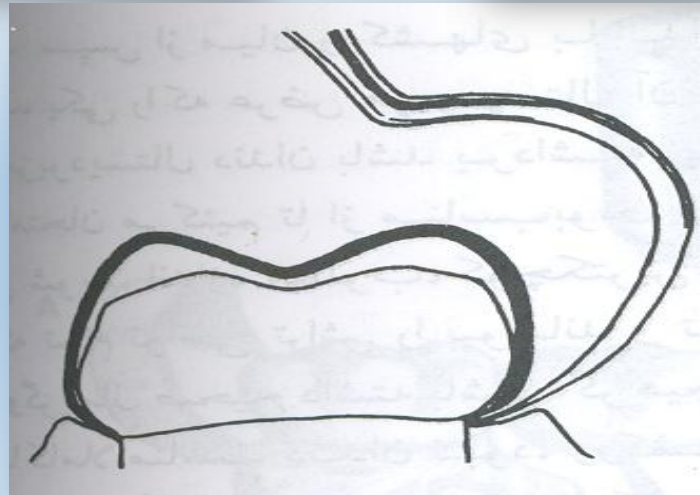
Crimp the crown margins



Cement the crown on the tooth with suitable cement



Remove excess cement and make a final check of completed restoration



Follow up



Loss of space





3M- DNTO -KTR -YF

مزید دستیالی		باکولینگوالی	
3M	YF	بیشترین تطابق	مولر اول شیرى قك يالا
YF	DNTO	کمترین تطابق	
YF	YF	بیشترین تطابق	مولر دوم شیرى قك يالا
KTR	KTR	کمترین تطابق	
DNTO	KTR	بیشترین تطابق	مولر اول شیرى قك يابین
YF	DNTO	کمترین تطابق	
DNTO	YF	بیشترین تطابق	مولر دوم شیرى قك يابین
KTR	DNTO	کمترین تطابق	