

بنام خداوند جان و خرد



# Stainless Steel Crowns



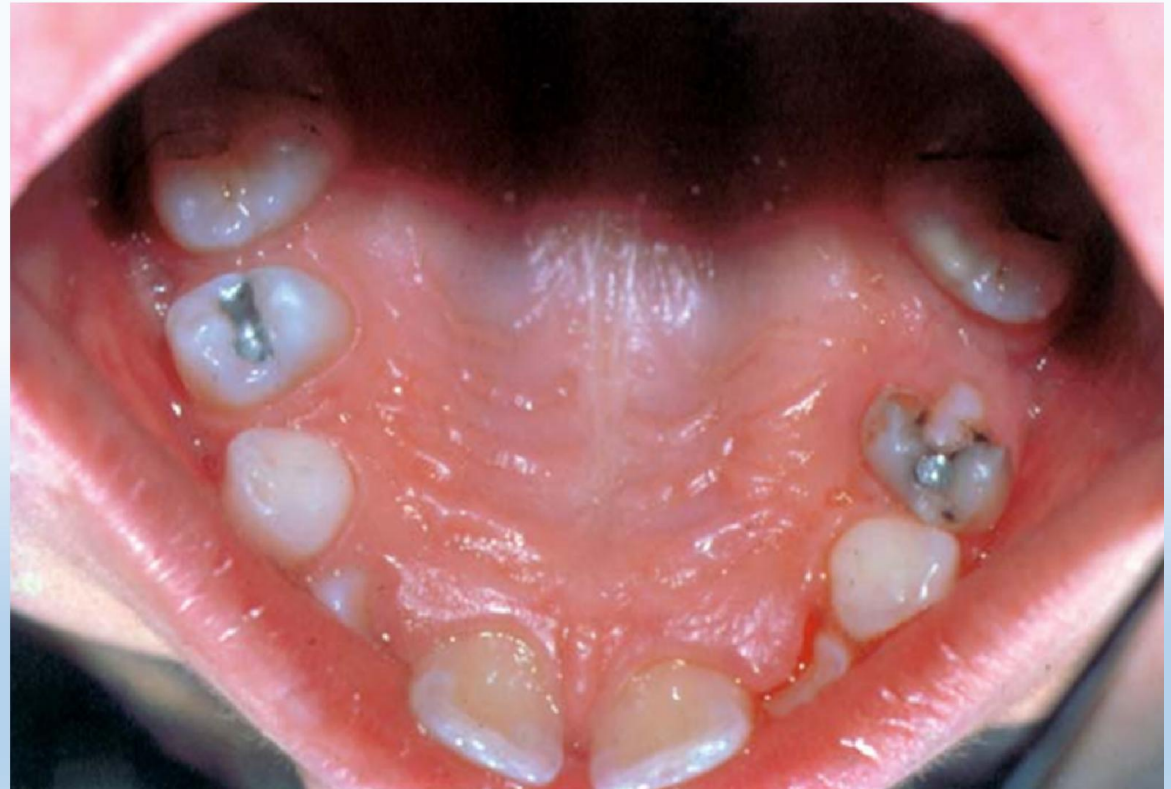
# Stainless Steel Crowns



# Failure rates

- 14% SSC
- 35.5% Am.
- 25.8% GI
- 29.1% ATR

SSC failure.....



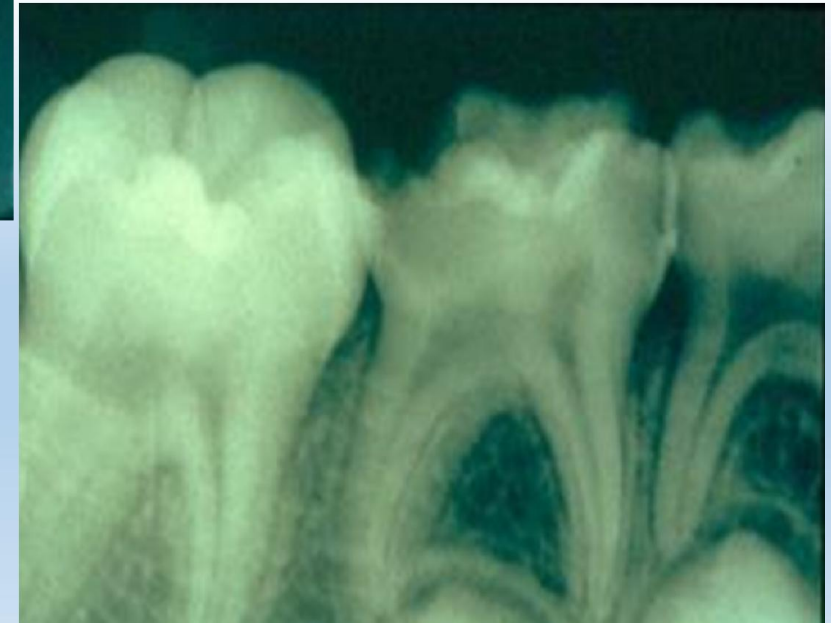
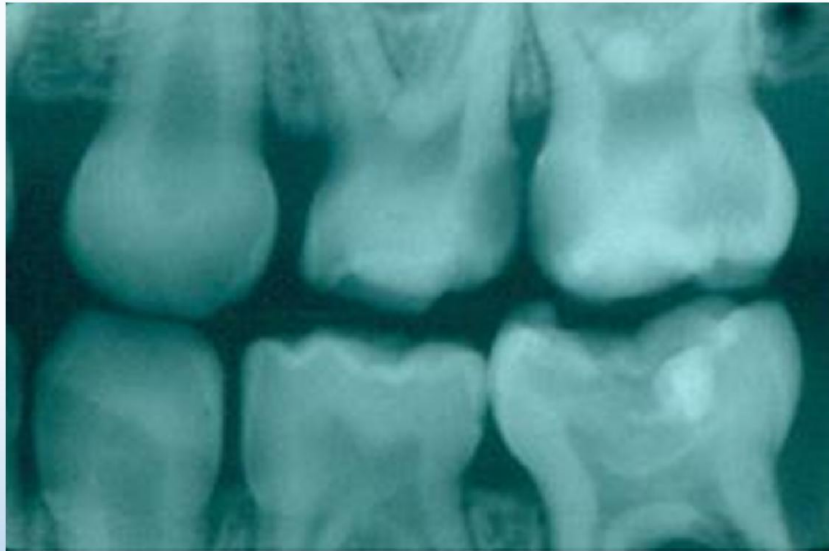
# Advantages of Stainless Steel Crowns

---

- Can be used for badly broken down crowns
- Can be placed with poor isolation
- Fast
- Economical
- Full coverage-prevents recurrent decay
- Durable

# Indications of S.S. Crowns

# Primary & permanent molars requiring large multisurface restoration



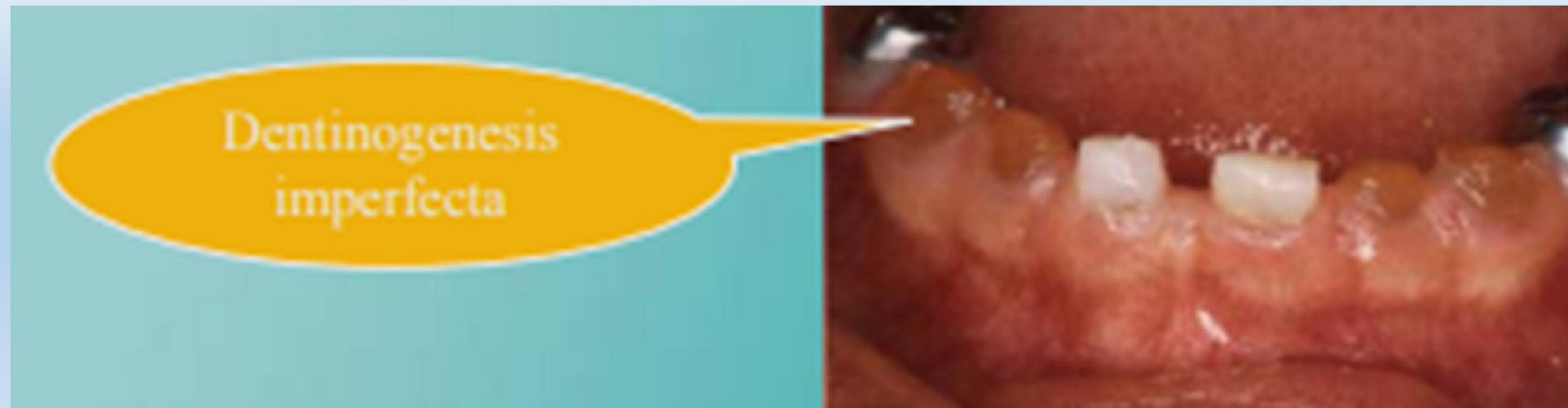
# Children with rampant caries



# Teeth after pulptherapy



# Teeth with developmental defects



# Fractured primary molars



As an abutment for space maintainer

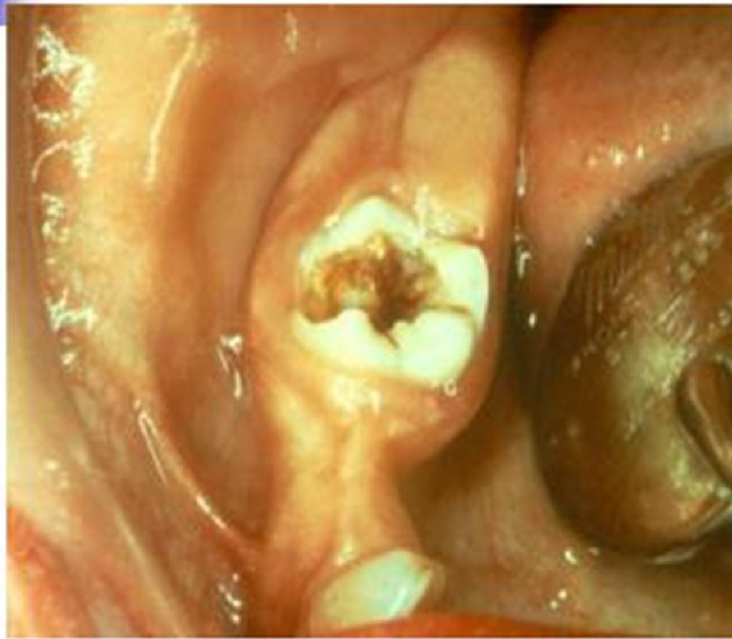


# Children with bruxism



# Indications: Permanent Teeth

---

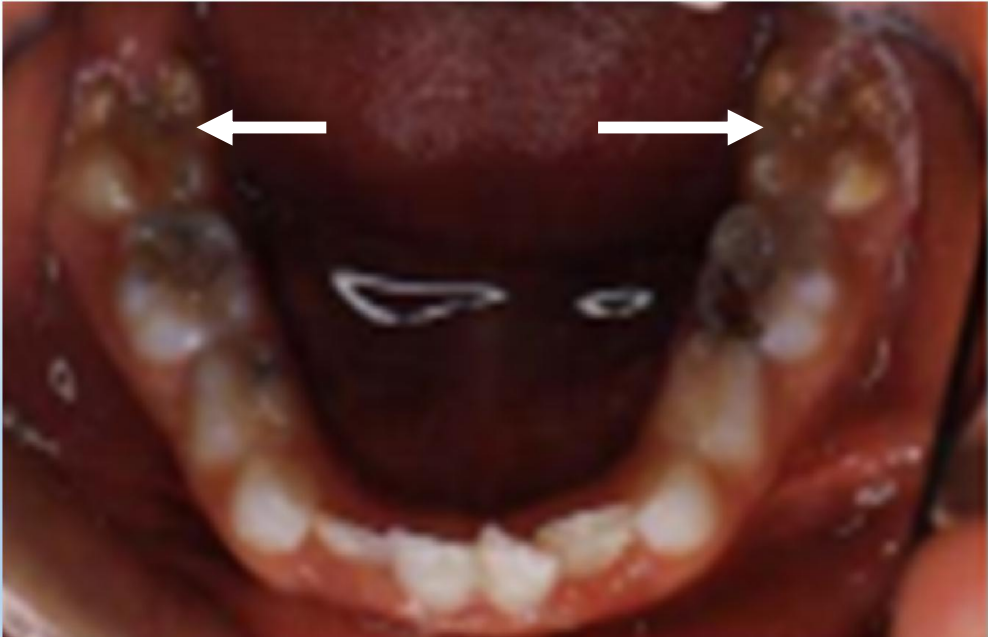


Large, Deep Caries



Enamel Hypoplasia

# Restoration of hypoplastic young permanent molars



# Reasons Given for Not Placing Stainless Steel Crowns

---

- Time Consuming to Fit
- Difficult to Manipulate
- Expensive

**ugly**

Stainless Steel Crowns are  
Fast!!!



Stainless Steel Crowns are just as easy to manipulate as a matrix band!

## Stainless Steel Crowns are Economical

---

- You decide the fee
- Best chance of one appointment treatment.

Metal Allergy

Gingival Health

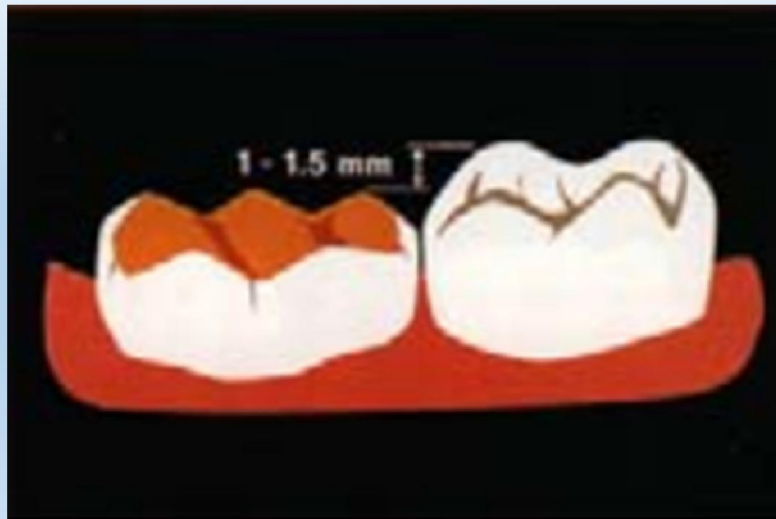
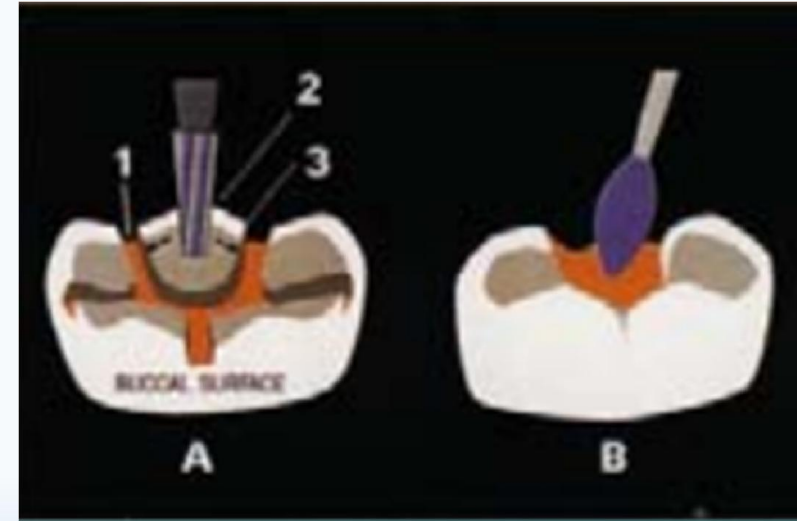
# Stainless steel crown technique



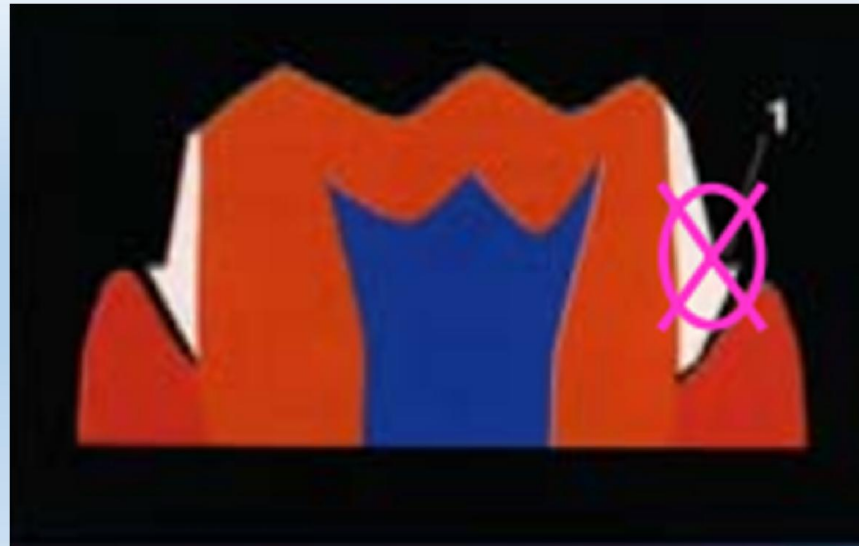
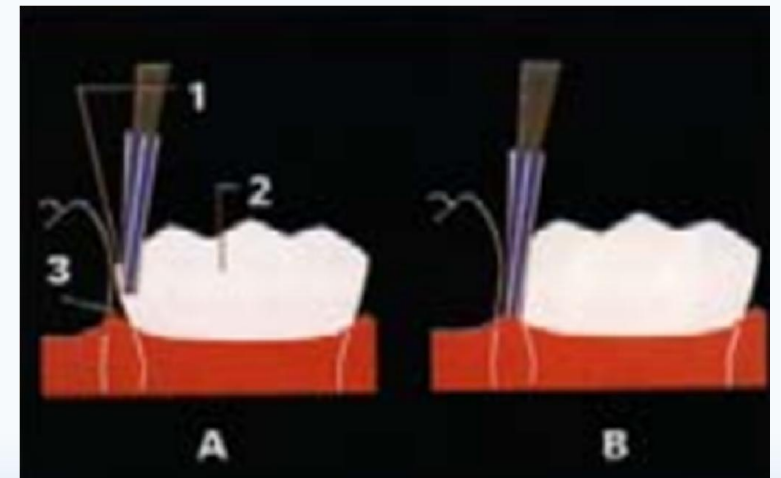
# Local analgesia and rubberdam

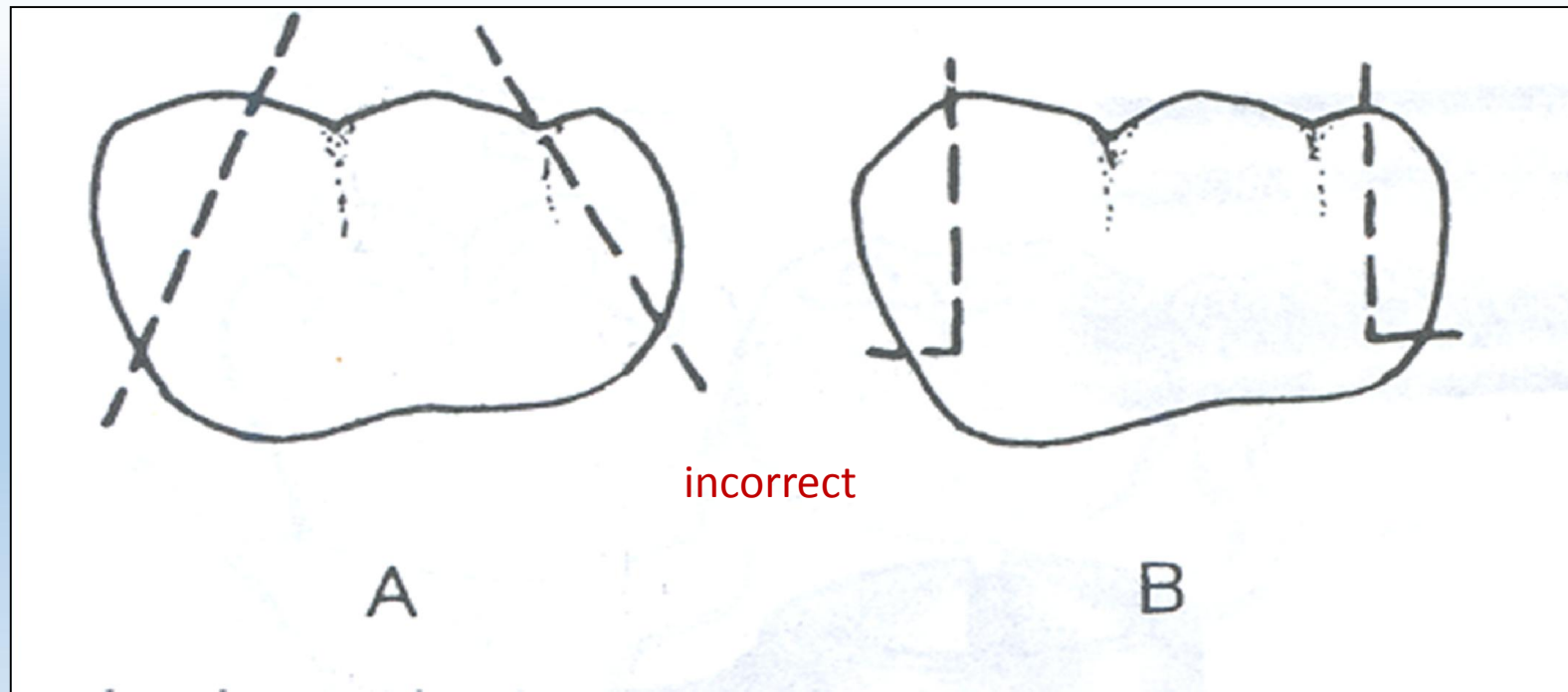
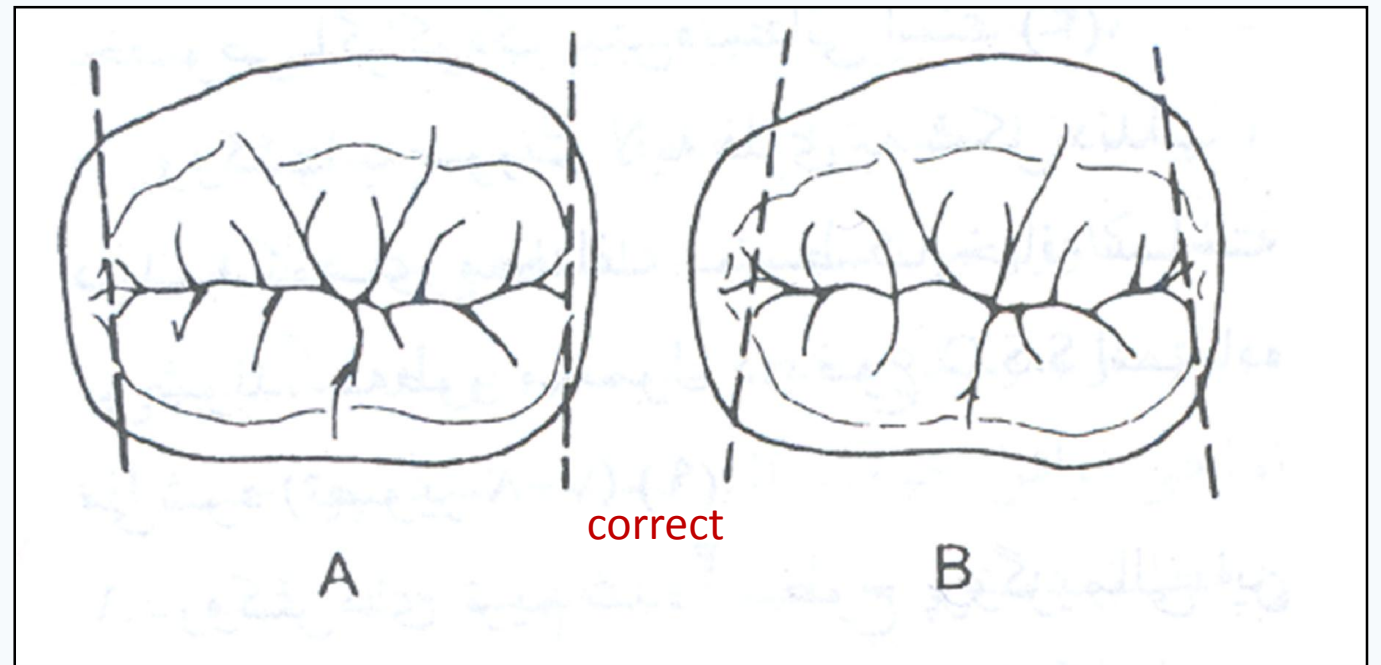


# Reduction of occlusal height

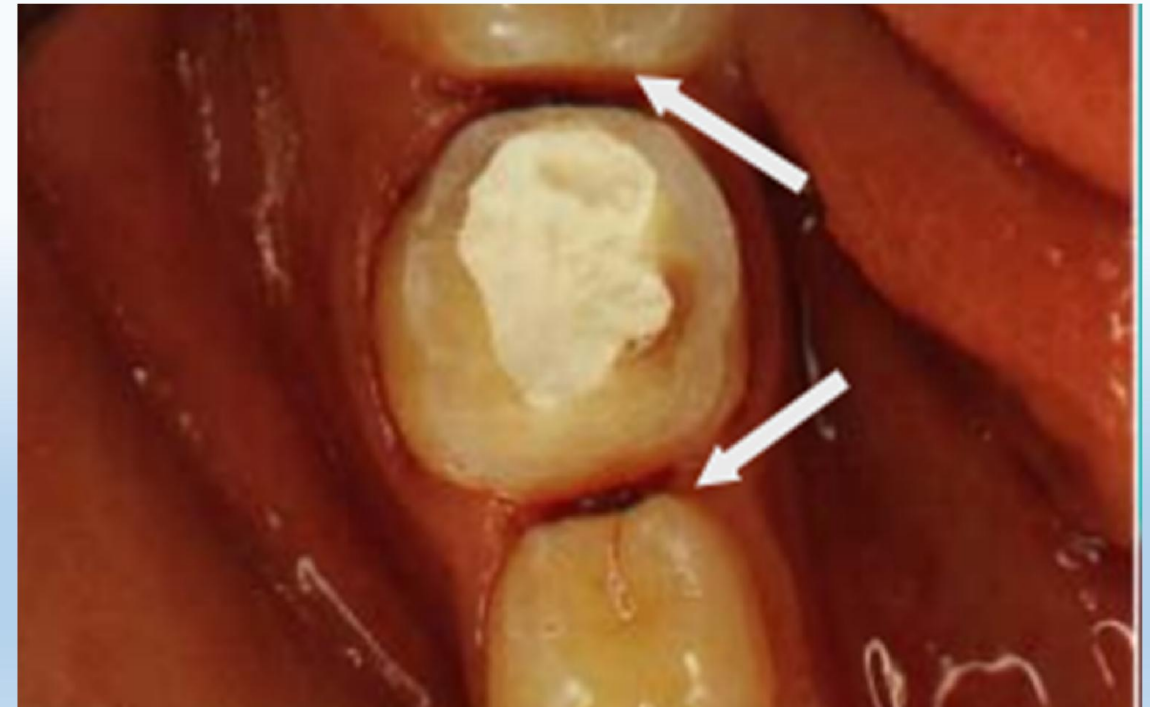


# Reduction of mesial and distal proximal surface





Round – off sharp edges and make a final check of the preparation



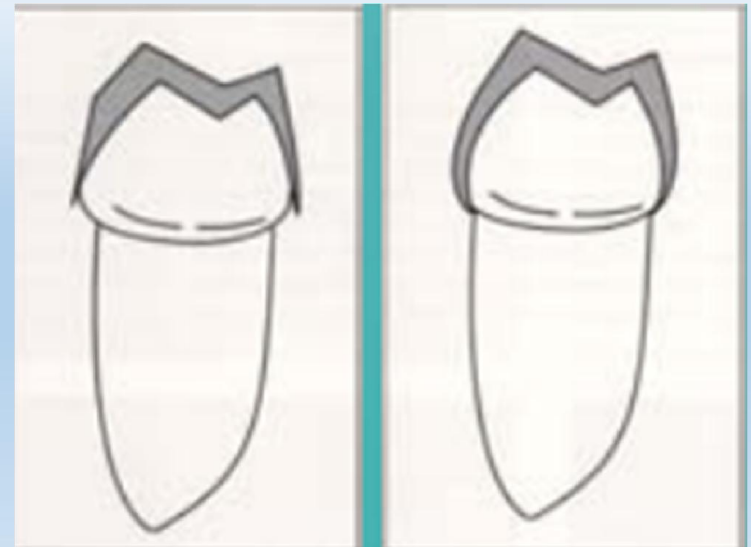
# Select a crown for a trial fit



Adjust the crown if required



# Crimp the crown margins



Cement the crown on the tooth with suitable cement



Remove excess cement and make a final check  
of completed restoration



# Follow up



# Loss of space





# 3M- DNTO -KTR -YF

مزید دستیالی		باکولینگوالی	
مولر اول شیرى قك يالا	بیشترین تطایق	YF	3M
	کمترین تطایق	DNTO	YF
مولر دوم شیرى قك يالا	بیشترین تطایق	YF	YF
	کمترین تطایق	KTR	KTR
مولر اول شیرى قك يابین	بیشترین تطایق	KTR	DNTO
	کمترین تطایق	DNTO	YF
مولر دوم شیرى قك يابین	بیشترین تطایق	YF	DNTO
	کمترین تطایق	DNTO	KTR