



IN THE NAME OF GOD

---



# BREAST IMAGING



# Common modalities for evaluation of breast diseases

---

1-Ultrasonography

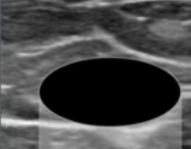
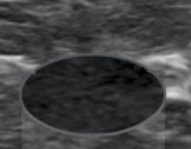
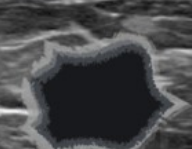

2-Mammography

3-MRI

4-PET CT

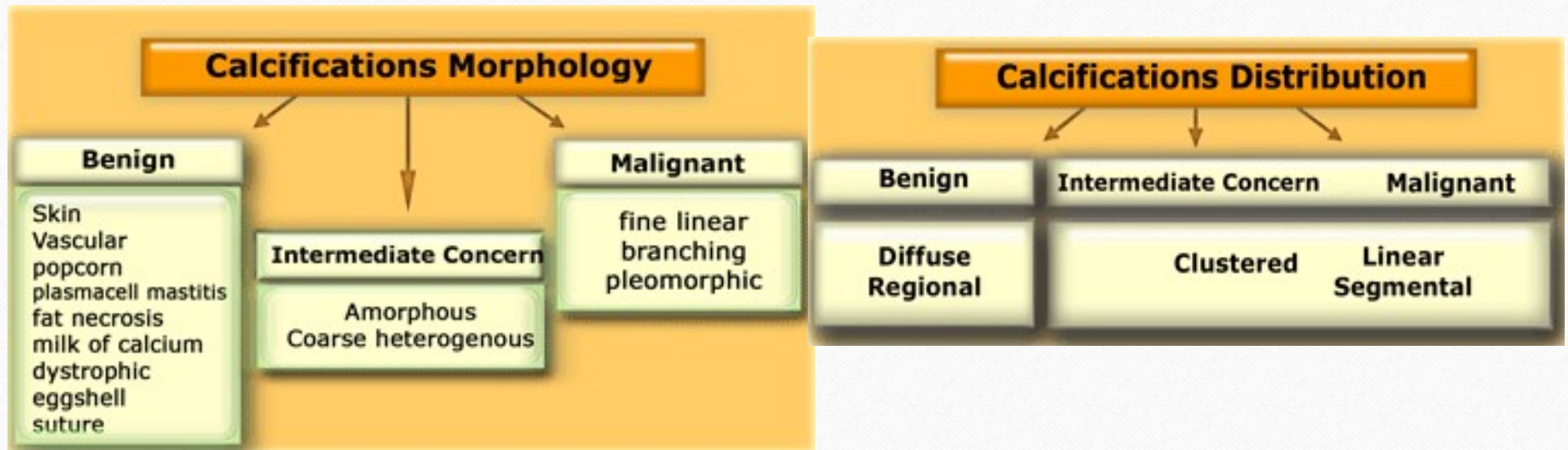
5-Some non common modalities ,just for research such as cone beam CT

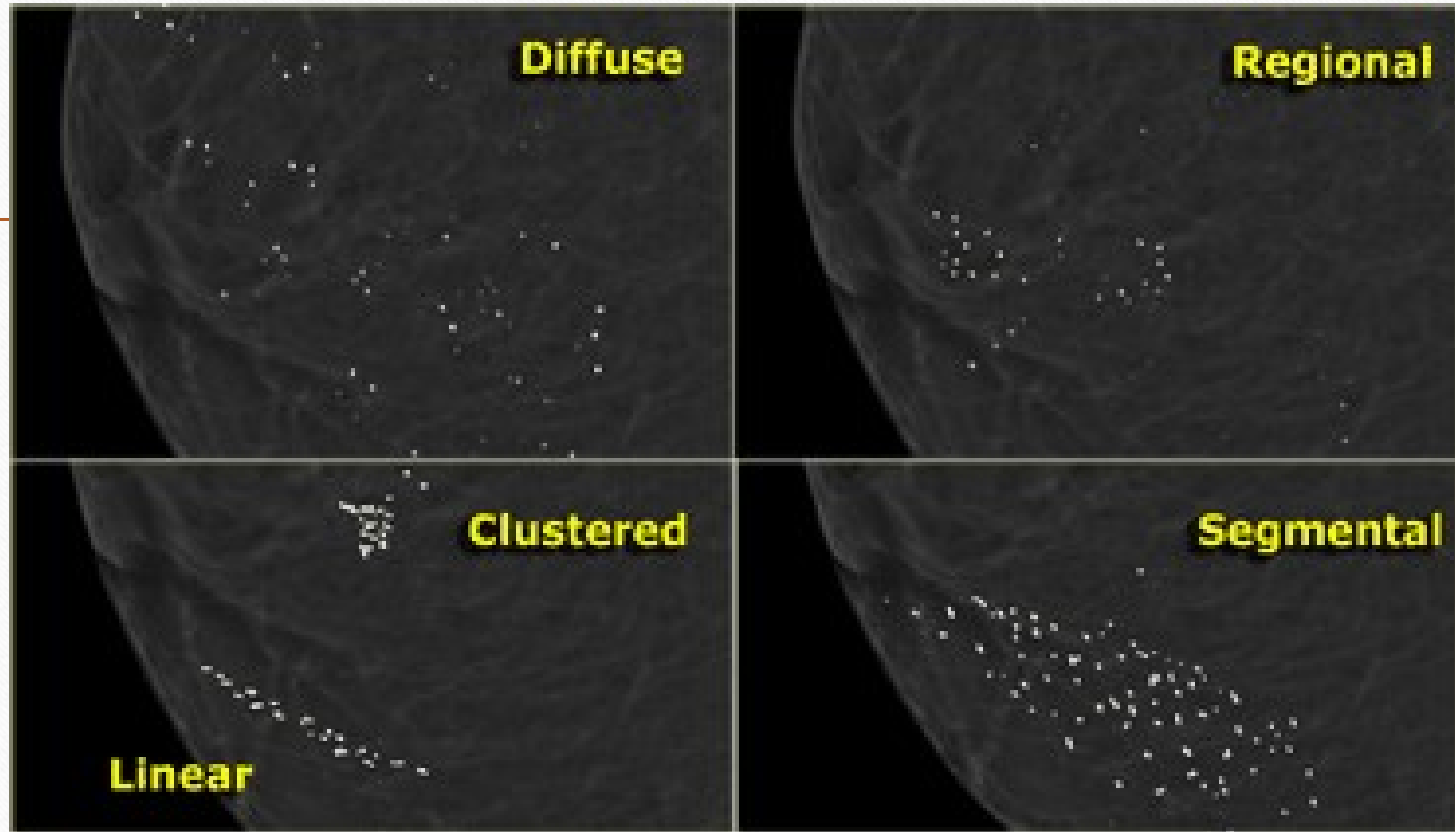
# Ultrasonography of breasts

| Cyst  | Fibroadenoma  | Cancer  | Glandular tissue  |
|---|---|---|---|
|  |  |            |  |
| Anechoic pattern  | Hypoechoic  | Hypoechoic  | Hyperechoic   |
| Oval or round shape   | Most common:<br>• oval or round<br><br>Less frequent:<br>• lobulated                | Most common:<br>• irregular shape<br><br>Less frequent:<br>• round or oval                    | Locally prominent glandular tissue  |
| Circumscribed margin  | Circumscribed margin  | Margin is not circumscribed:<br>• Indistinct<br>• angular<br>• microlobulated<br>• spiculated |   |
| Horizontal orientation  | Horizontal orientation  | Vertical orientation  |   |
| Posterior Enhancement   | Sometimes minimal posterior enhancement   | Frequently posterior shadowing  | No feature  |
| No calcifications   | May have gross calcifications   | May have small calcifications in or outside mass  | No  |



# Calcification patterns in mammography



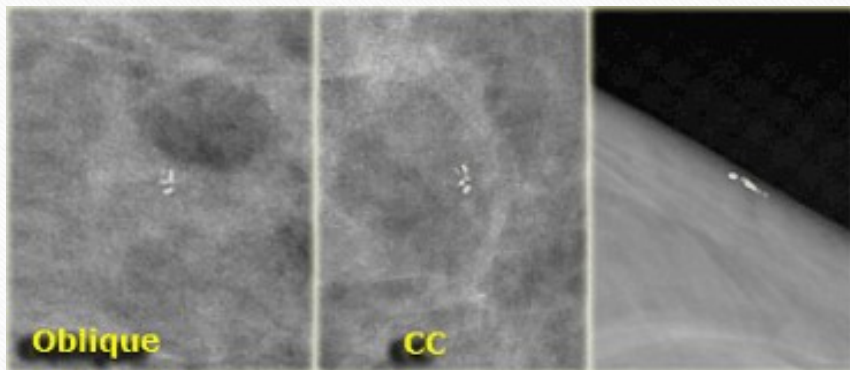




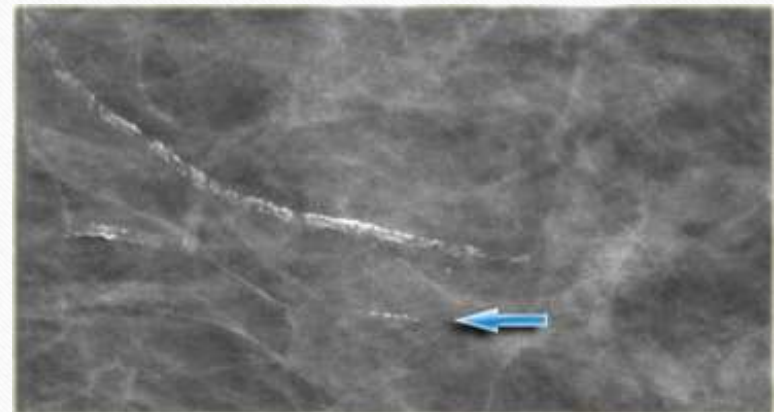
# Benign calcifications

---

skin



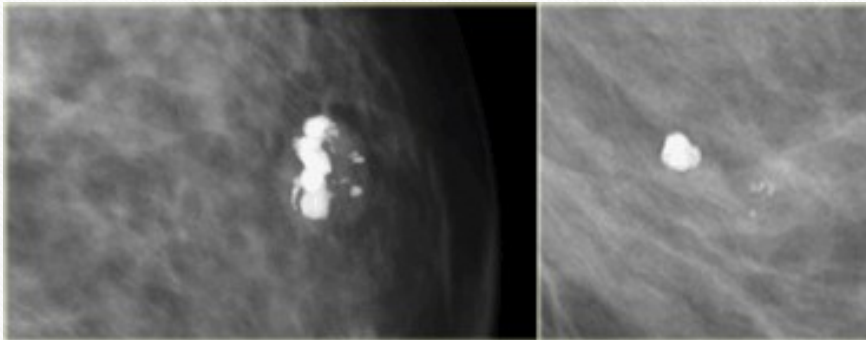
vascular



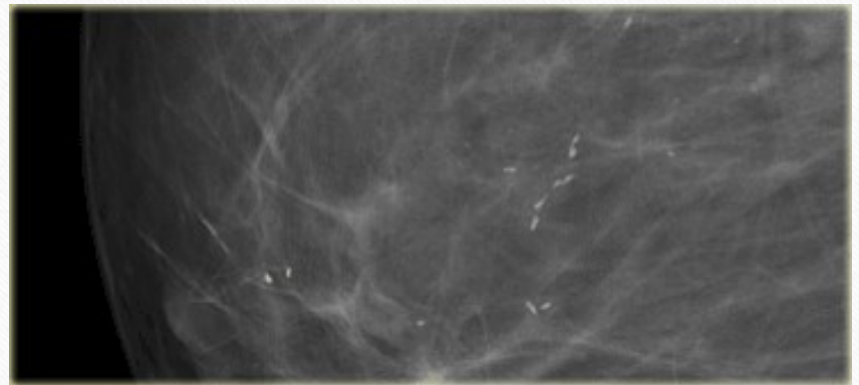
# Benign calcifications

---

Popcorn(BR2)



Rod-like(BR3)

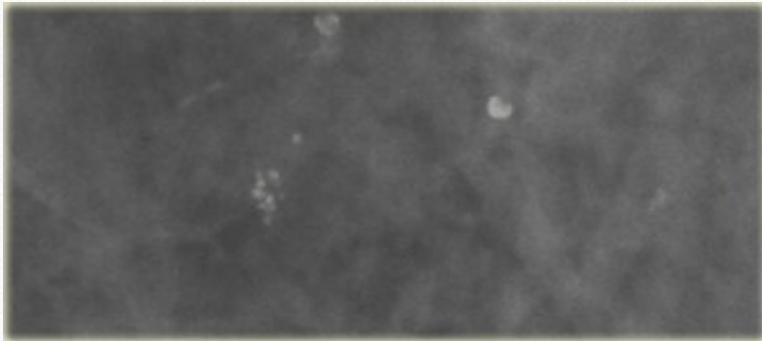




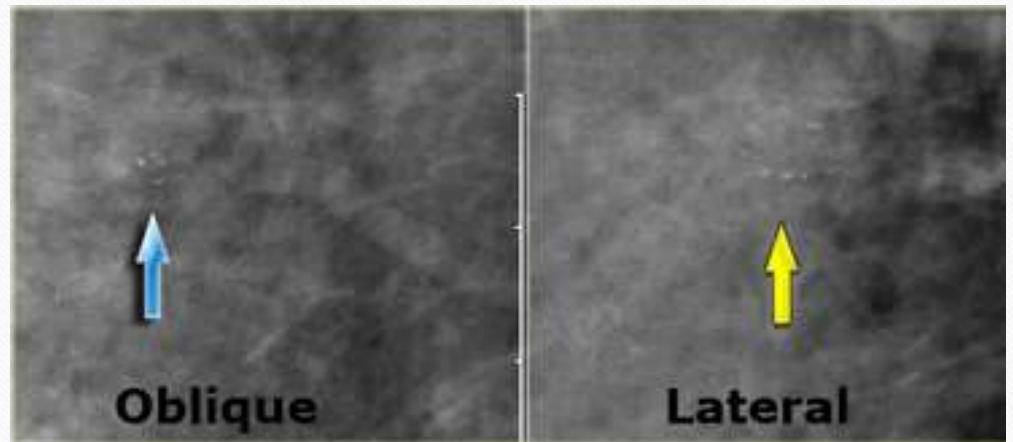
# Benign calcifications

---

Round punctate(BR 3-4)



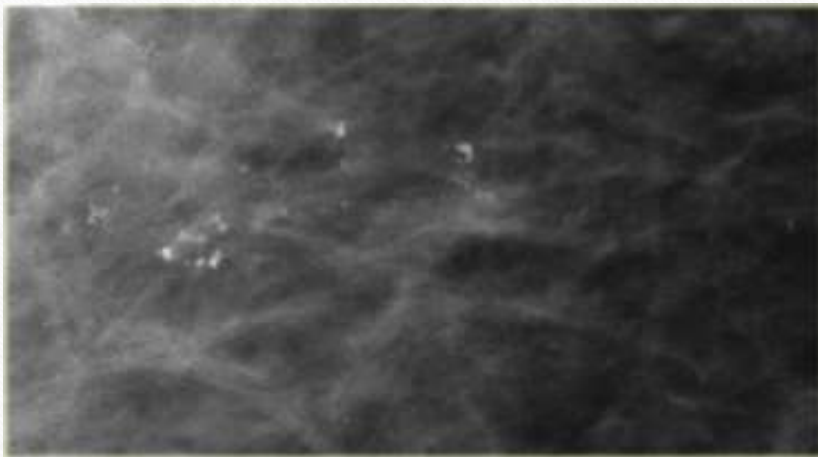
Milk of calcium(BR2)



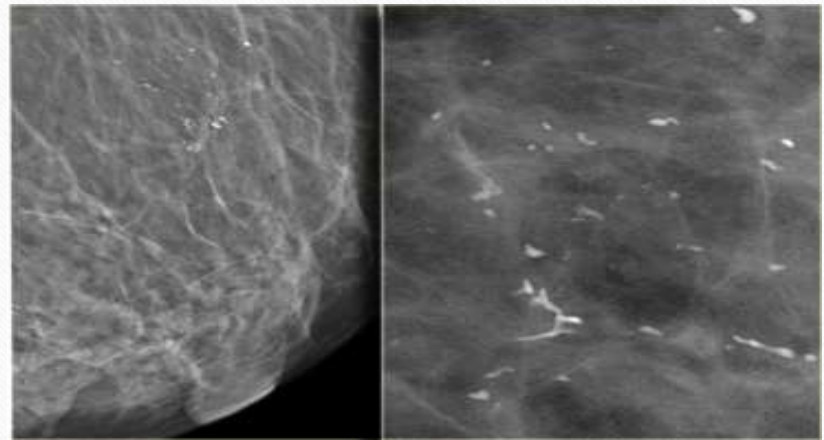
# Suspicious calcifications

---

Amorphous(BR4)



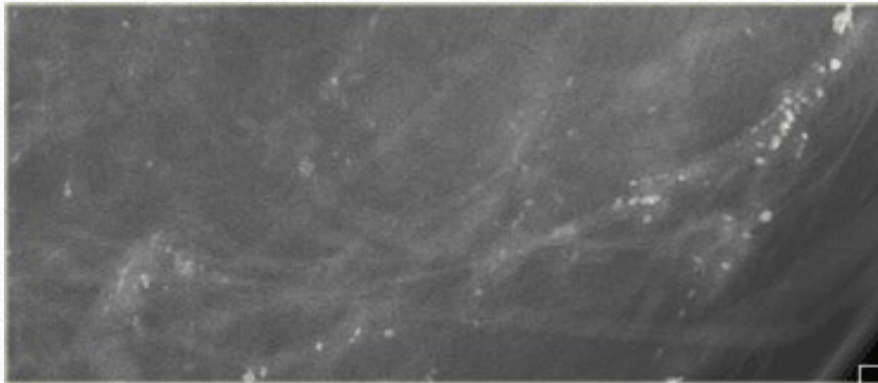
Coarse heterogenous(BR4)



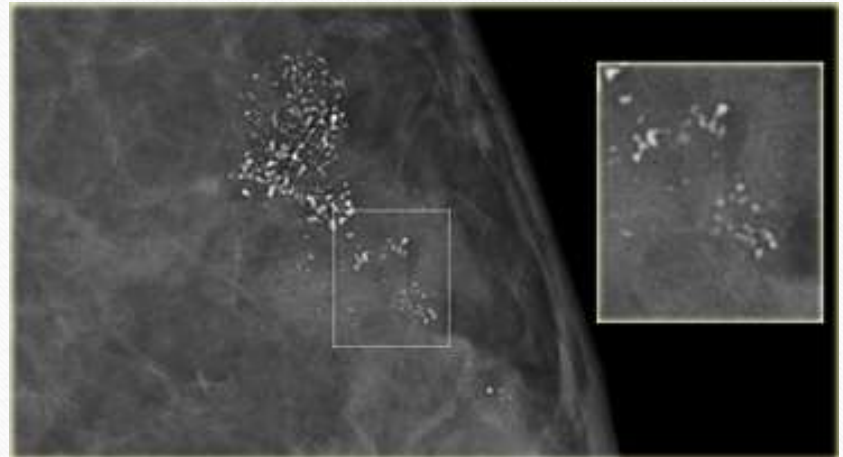


# High risk calcifications

Fine pleomorphic(BR5)



Fine linear  
branching(casting)(BR5)



# MRI





# Indications of MRI

---

- High risk persons
- Extent of disease (EOD) evaluation in ipsilateral or contralateral side
- Positive margin
- Neo-adjuvant therapy: for residual tumor
- **In work up of metastatic axillary lymph nodes with unknown origin (70-80% sensitivity)**
- R/O of chest wall invasion.

## Breast MRI

### Focus and foci

< 5mm - cannot be specified

### Masses

**Shape** *round - oval - lobulated - irregular (32% ca)*

**Margin** *smooth - irregular - spiculated (80% ca)*

**T1 ↑** *lymphnode - fat necrosis - hamartoma*

**T2 fatsat ↑** *cyst - lymphnode - fibroadenoma  
fat necrosis - colloid carcinoma*

**Enhancement** *homogeneous - rim - septa etc.*

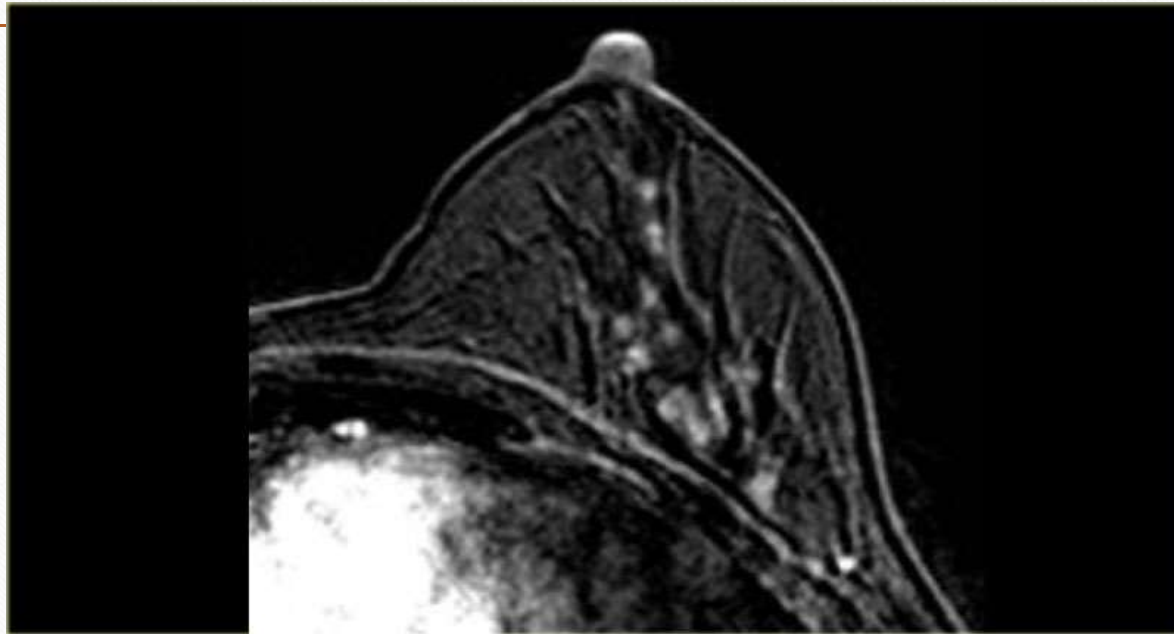
**Kinetics** *type I (6% ca) - type II - type III (29-77% ca)*

### Nonmass-like enhancement

*Linear - ductal - segmental - clumped etc*

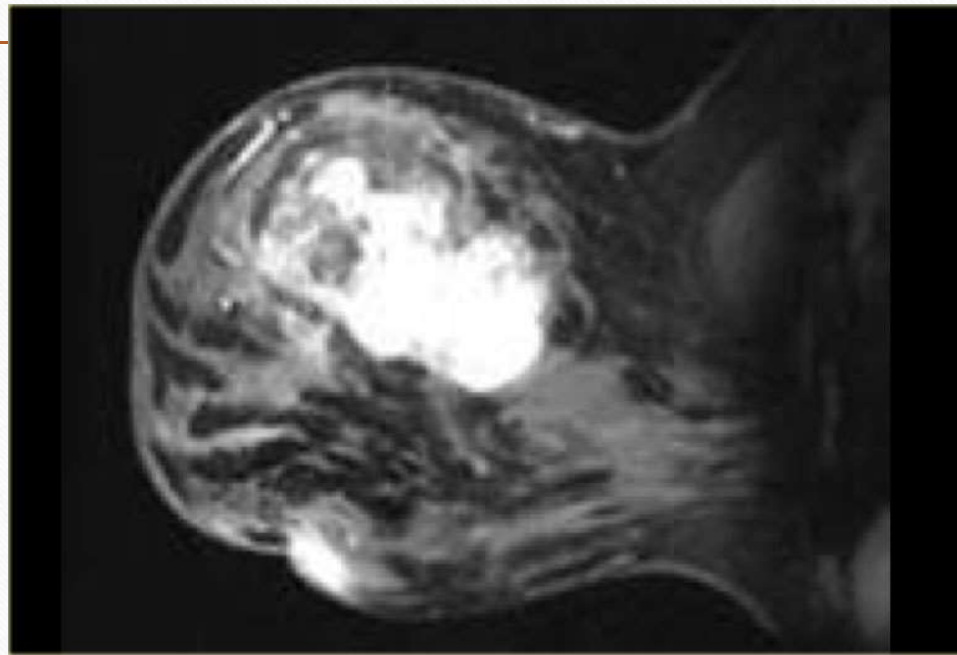


# FOCI

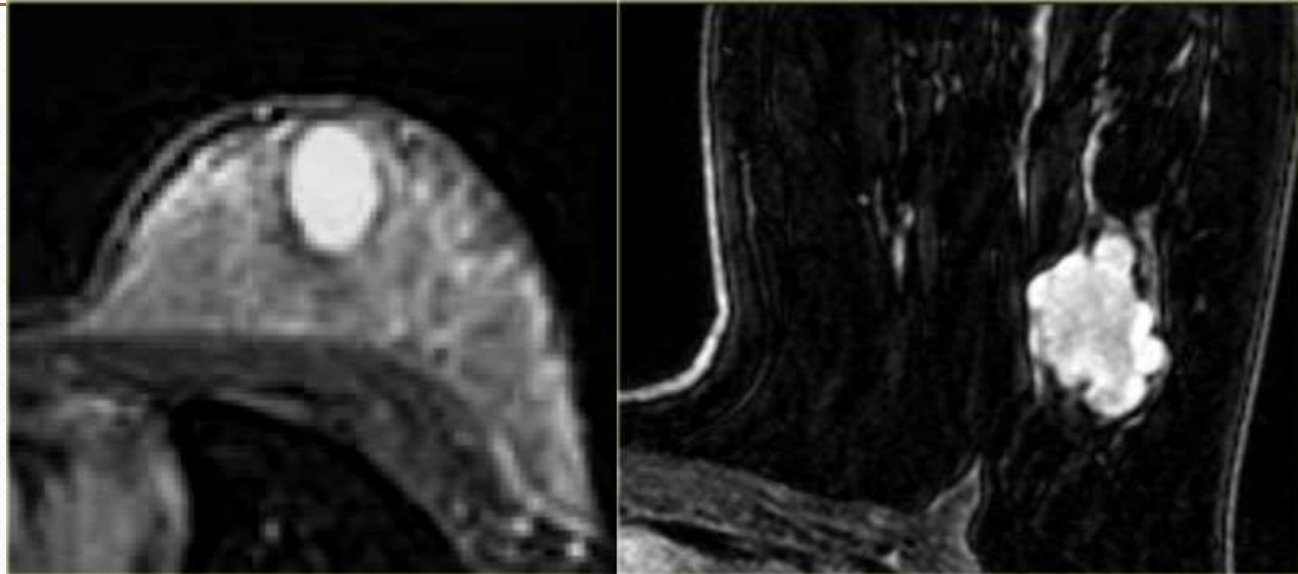


# MASSES

shape(Round,oval ,lobulated ,irregular)

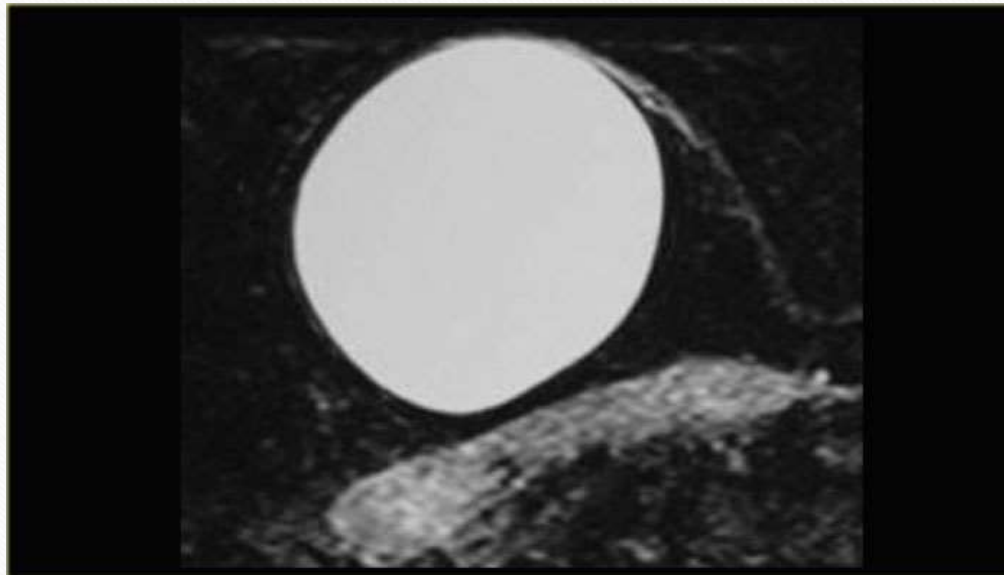






Margin(smooth,irregular,speculated)

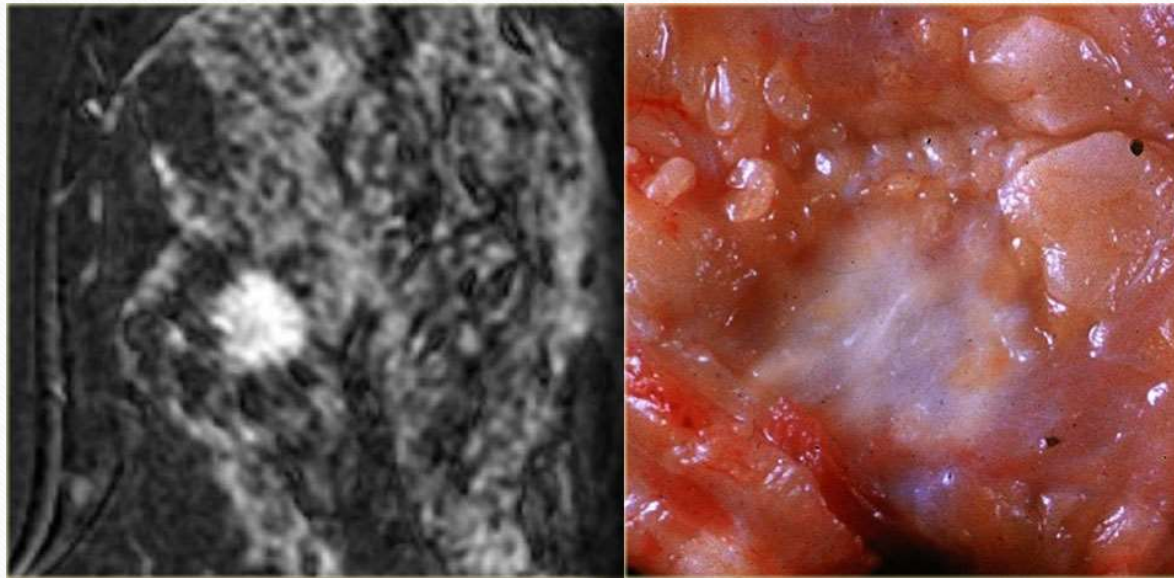
---

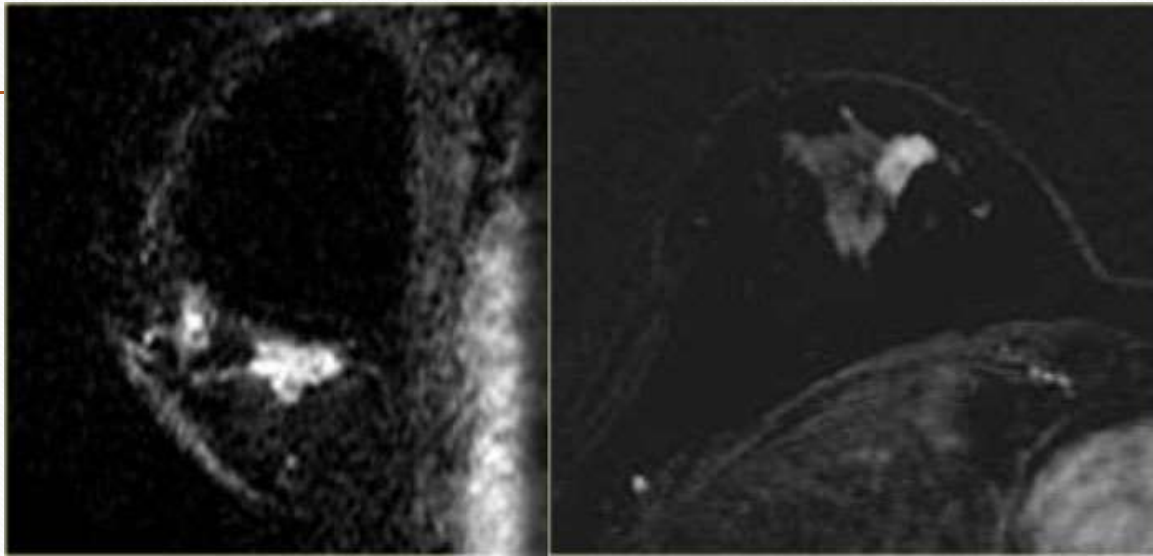




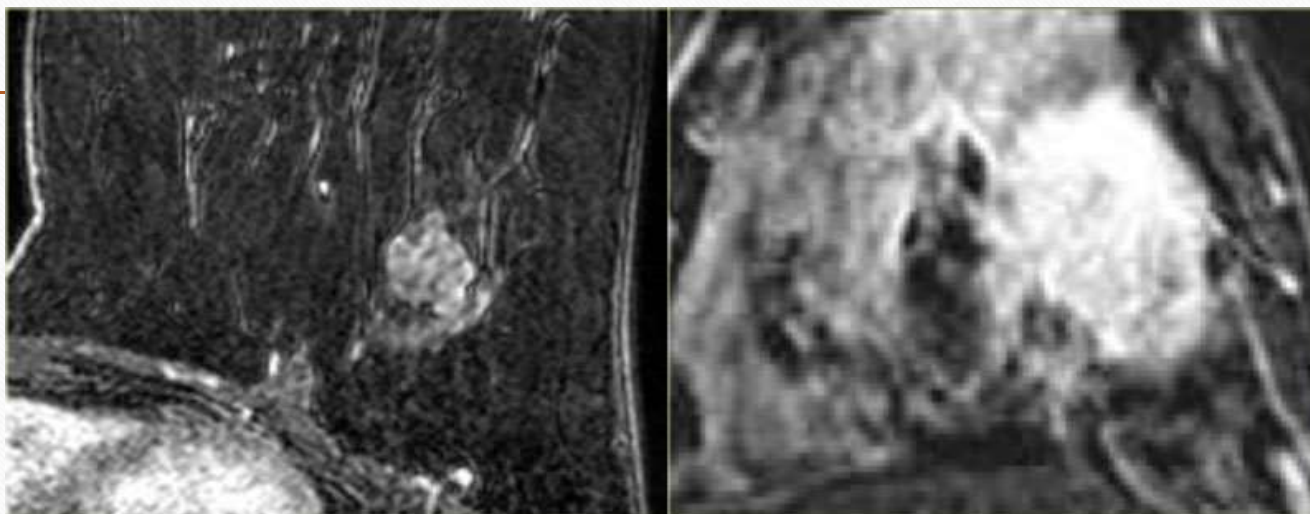
## Speculated margin mass

---





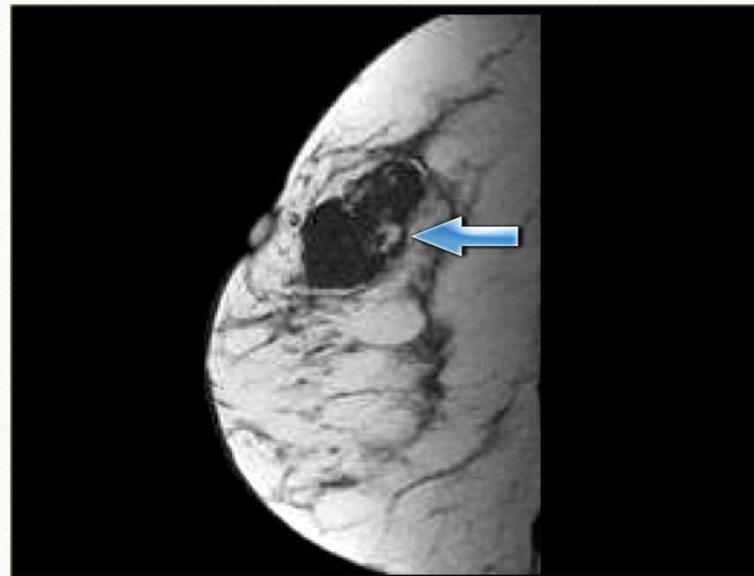




T1,T2 characterization

Fat containing lesions are mainly benign unless they are rapidly growing.

---





# Increase T1 signal in non-fat suppressed images

---

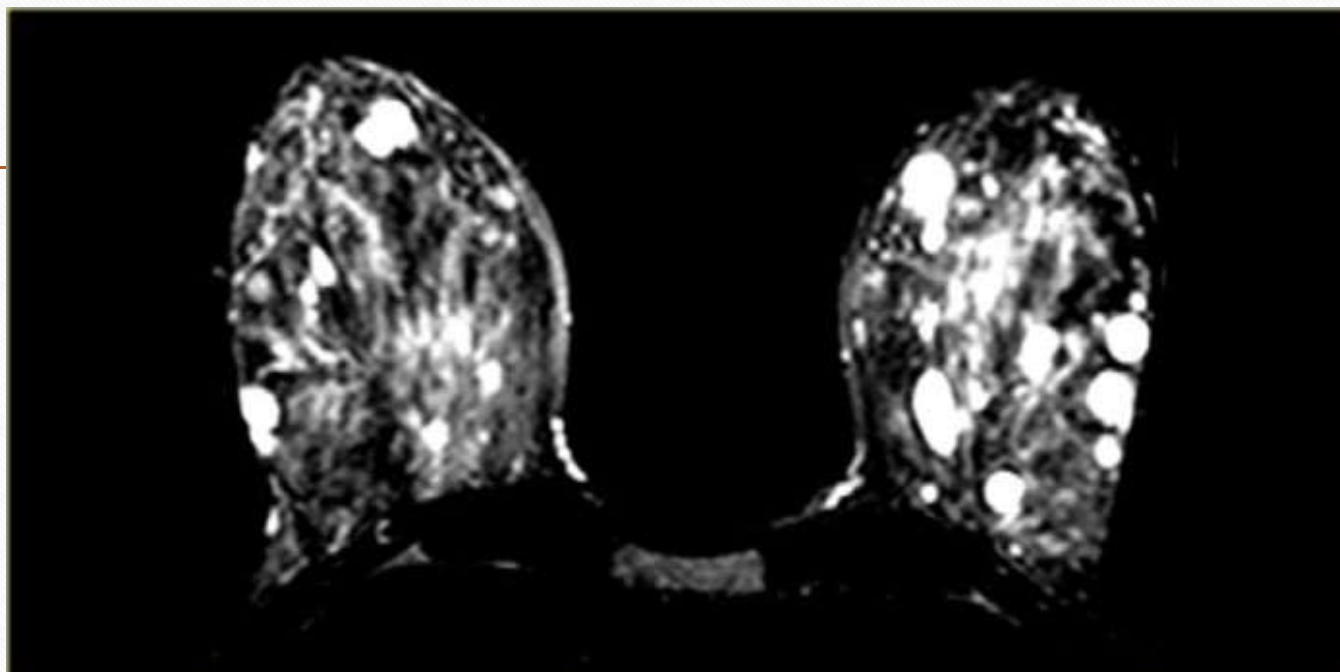
- Fat containing lesions such as hamatomas
- Intramammary lymph nodes.

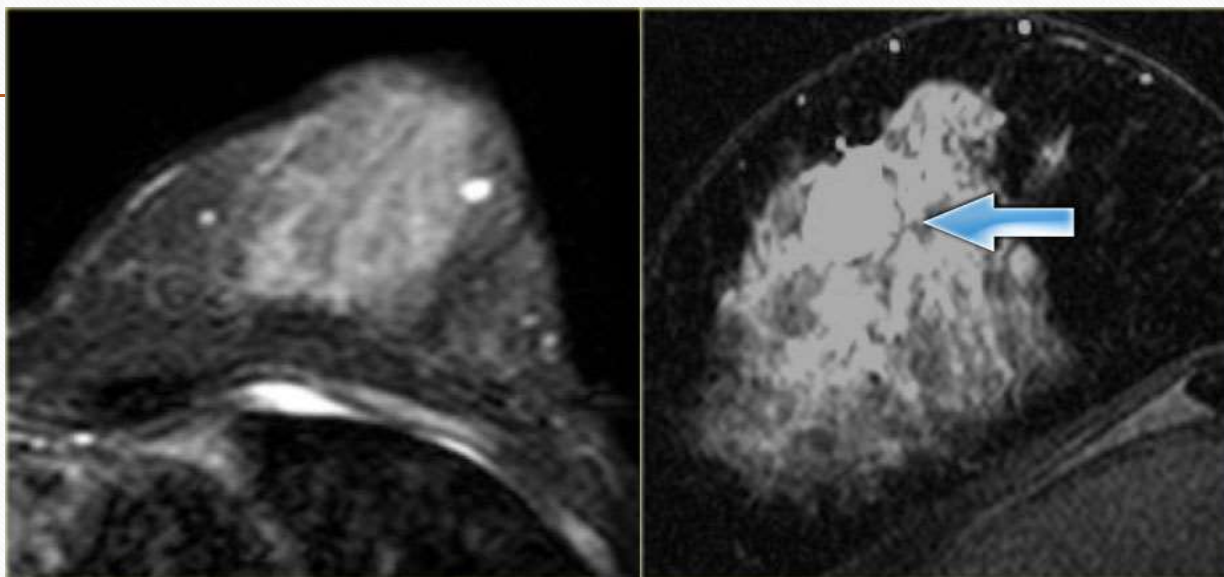
## Marked increased T2 signal (bright) in fat suppressed images

---

- Cysts
- Fat necrosis
- Lymph nodes
- Colloid carcinoma.
- Maybe fibroadenoma
- Rule: All of lesions which are hypersignal in T2 fat suppressed images are benign except of **colloid carcinoma**.









## T2 Fat Suppressed

### **Moderate signal**

- Invasive lobular ca
- DCIS
- Fibrocystic change

### **Low signal**

- Invasive ductal ca
- Sclerotic fibroadenoma
- Scar

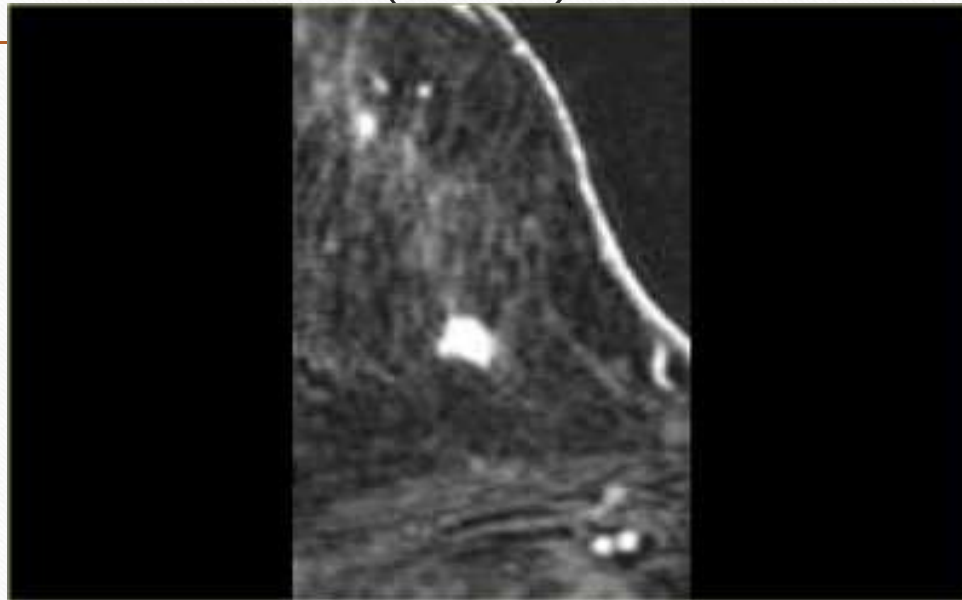
# Patterns of enhancement

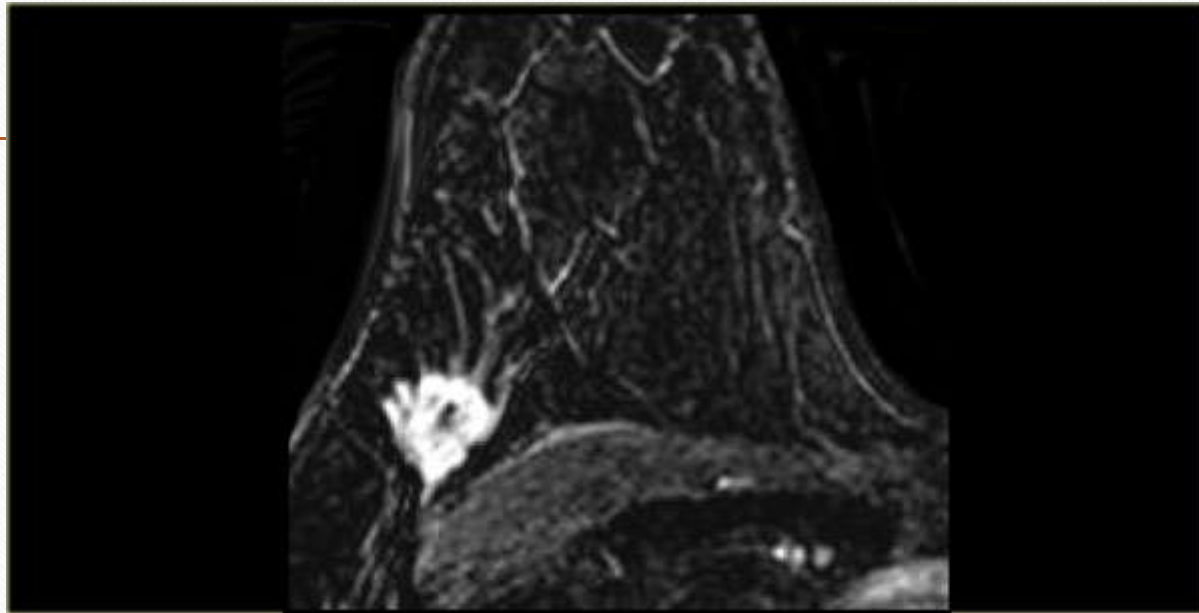
---

- 1-homogenous enhancement
- 2-Heterogenous enhancement
- 3-Rim enhancement
- 4-Dark internal septation
- 5-Enhancing internal septation
- 6-Central enhancement



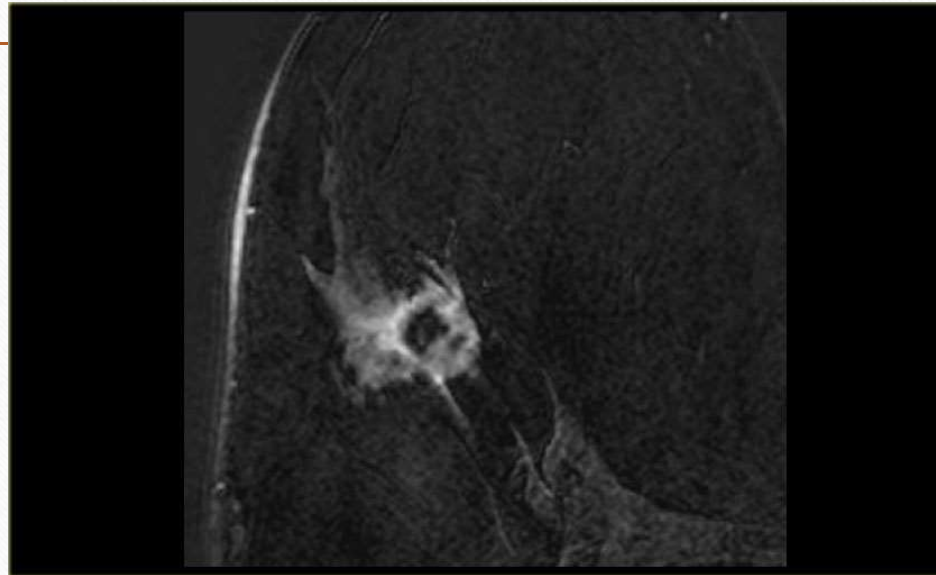
## Homogenous enhancement (IDC)



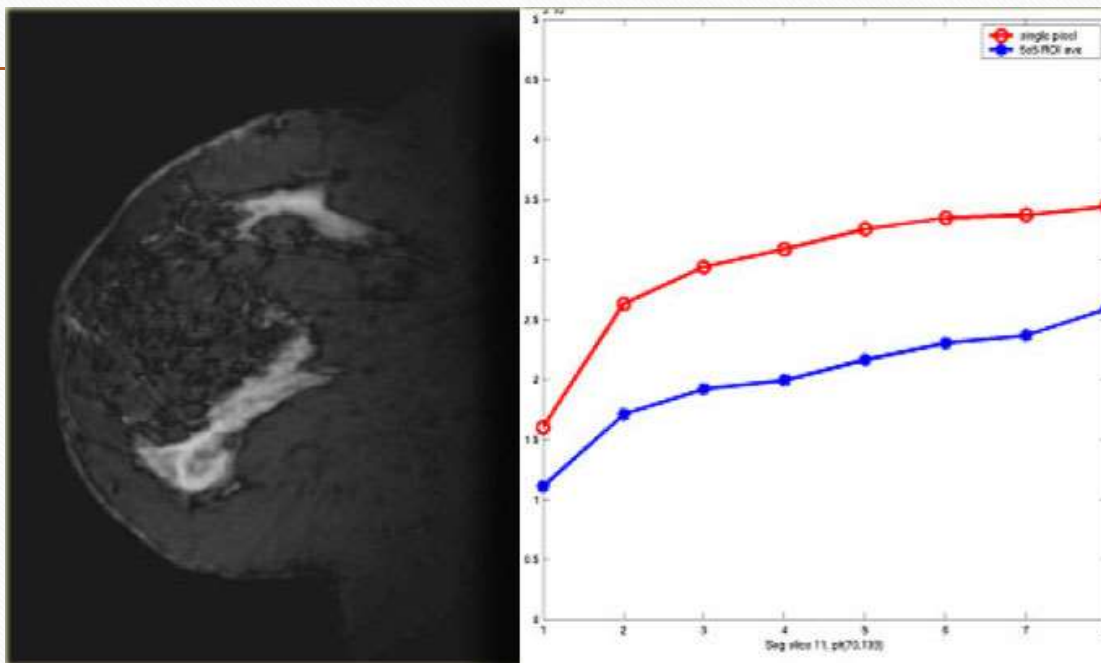




# Rim enhancement

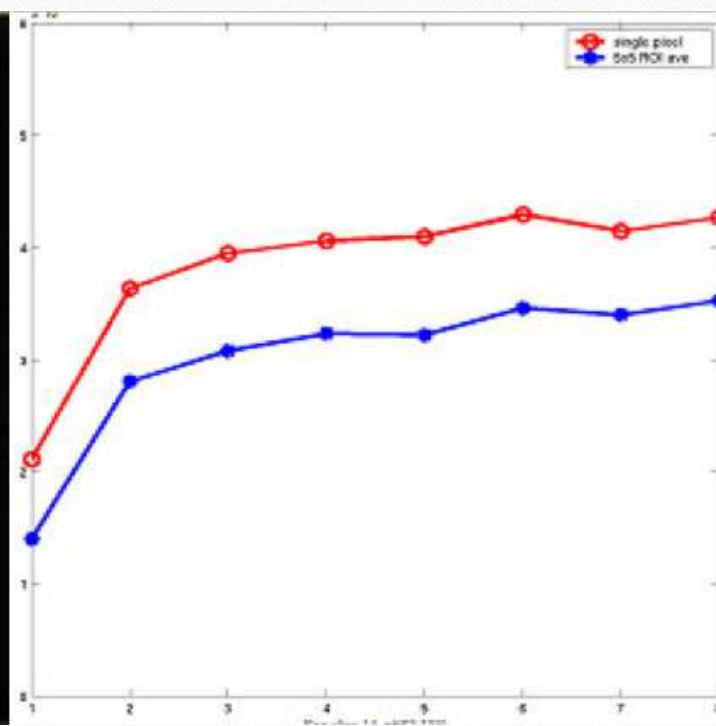
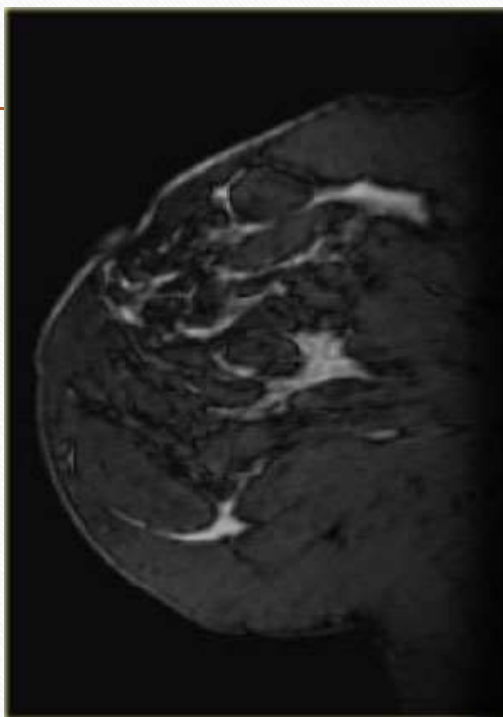


# Enhancement curves type 1

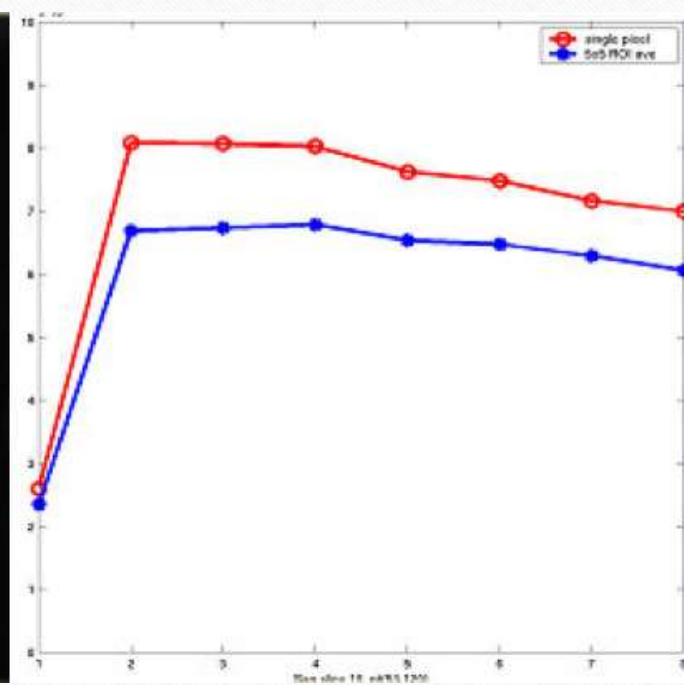
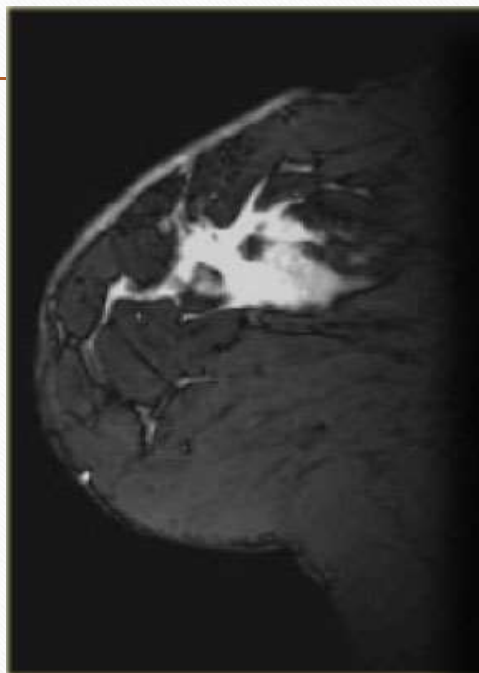




type2



# Type 3

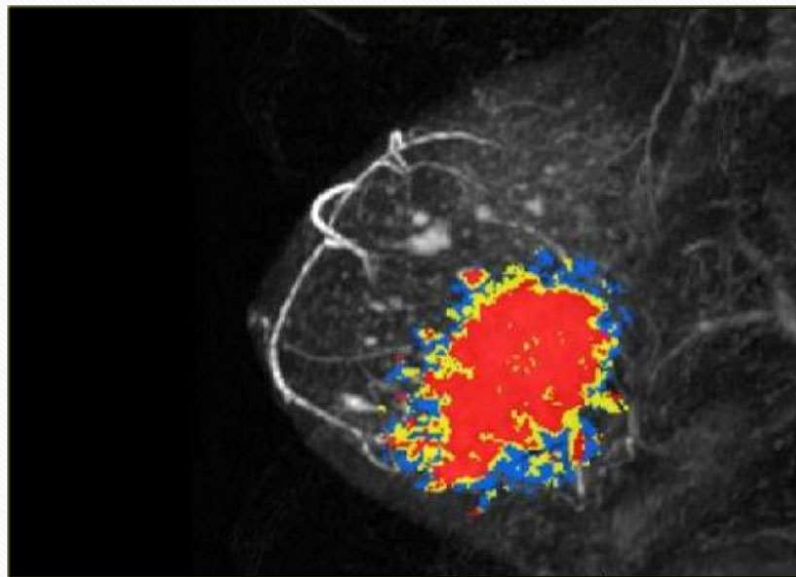


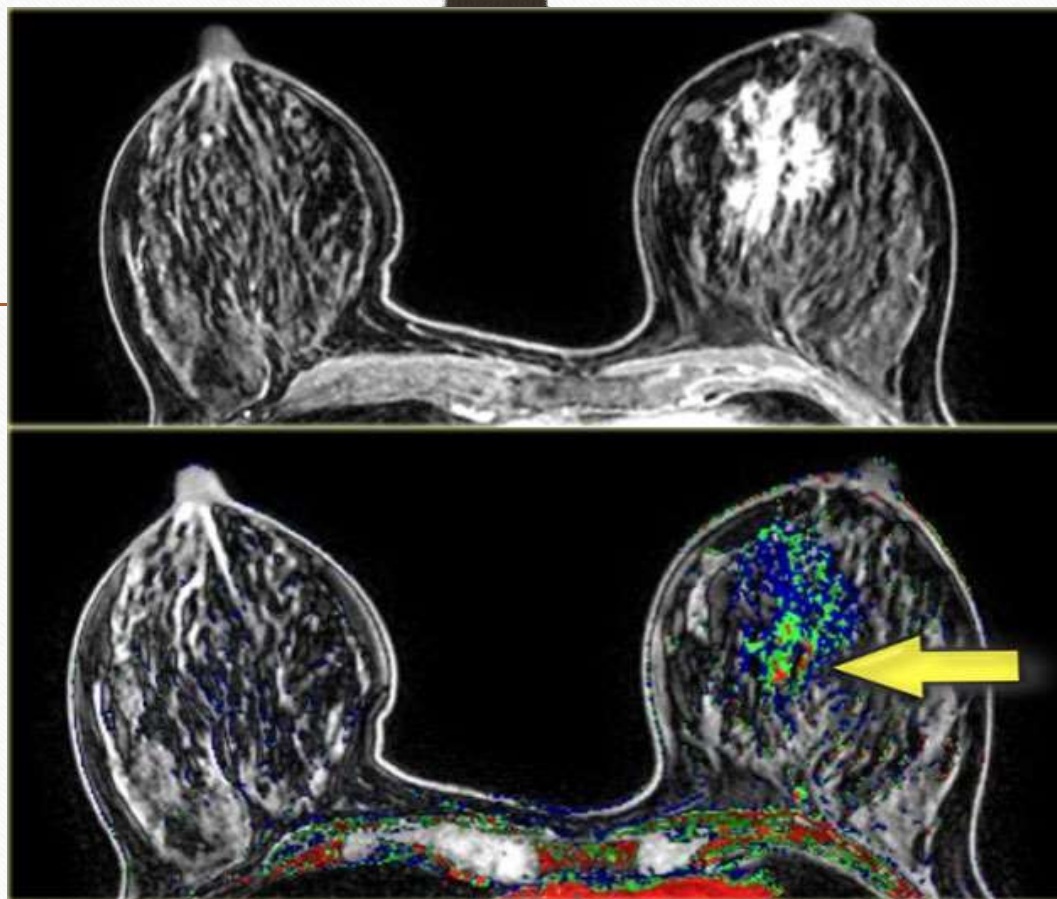


# CAD

(Computer Aided Detection)

---





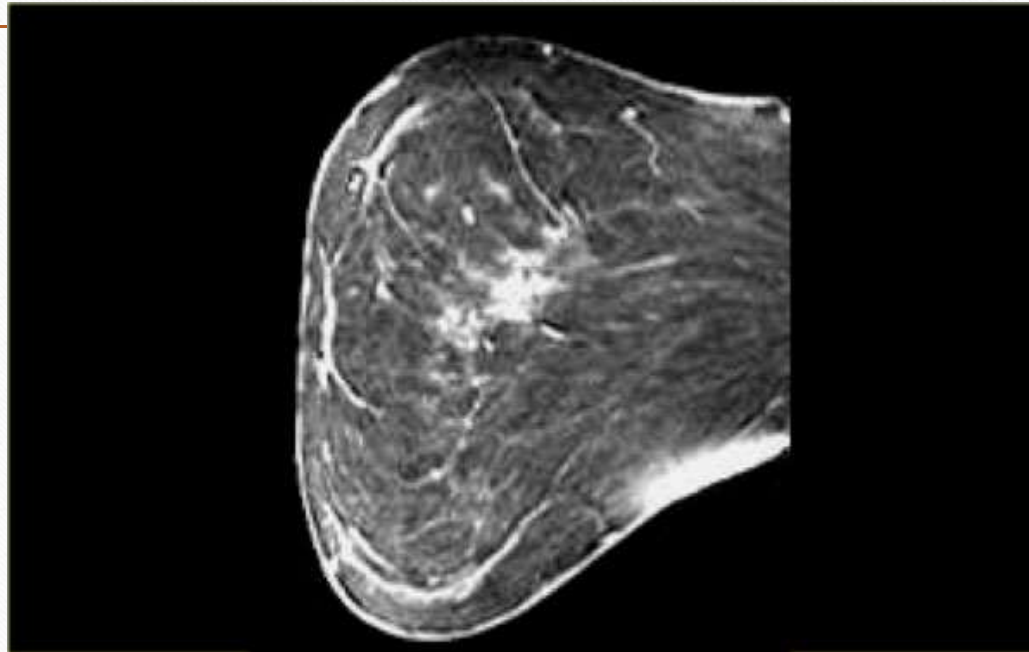


# Non-mass enhancement

## **Distribution – Non-mass enhancement**

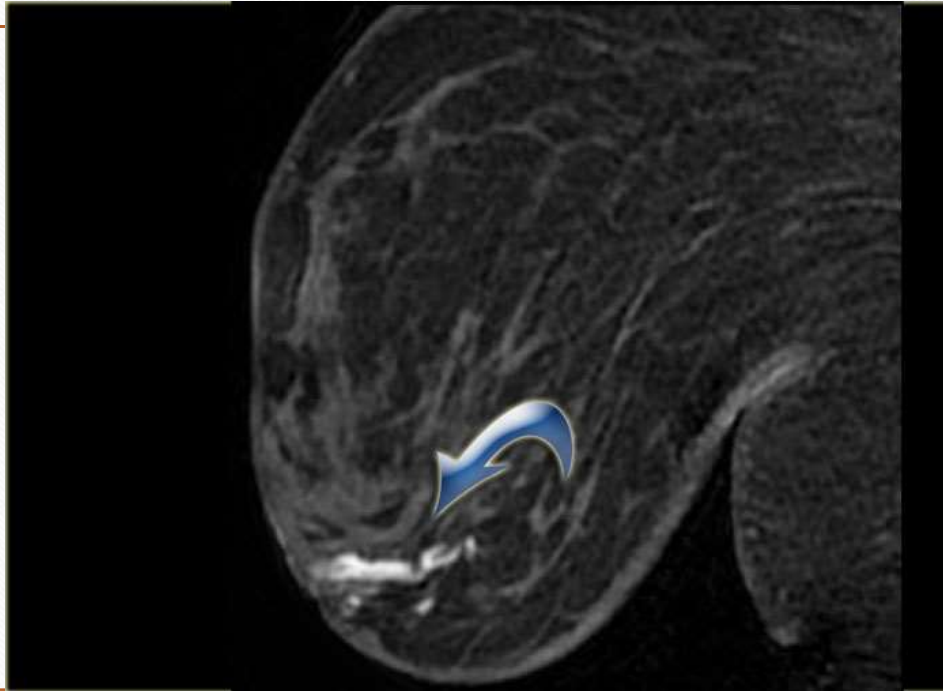
|           |   |
|-----------|---|
| Focal     | < 25% of a quadrant                       |
| Ductal    | – 60% cancer                              |
| Linear    | – Not ductal orientation<br>– 31% cancer  |
| Segmental | – Multiple ducts<br>– 78% cancer          |
| Regional  | – Not ductal or segmental<br>– 21% cancer |
| Diffuse   |   |

## Focal non-mass enhancement(DCIS)

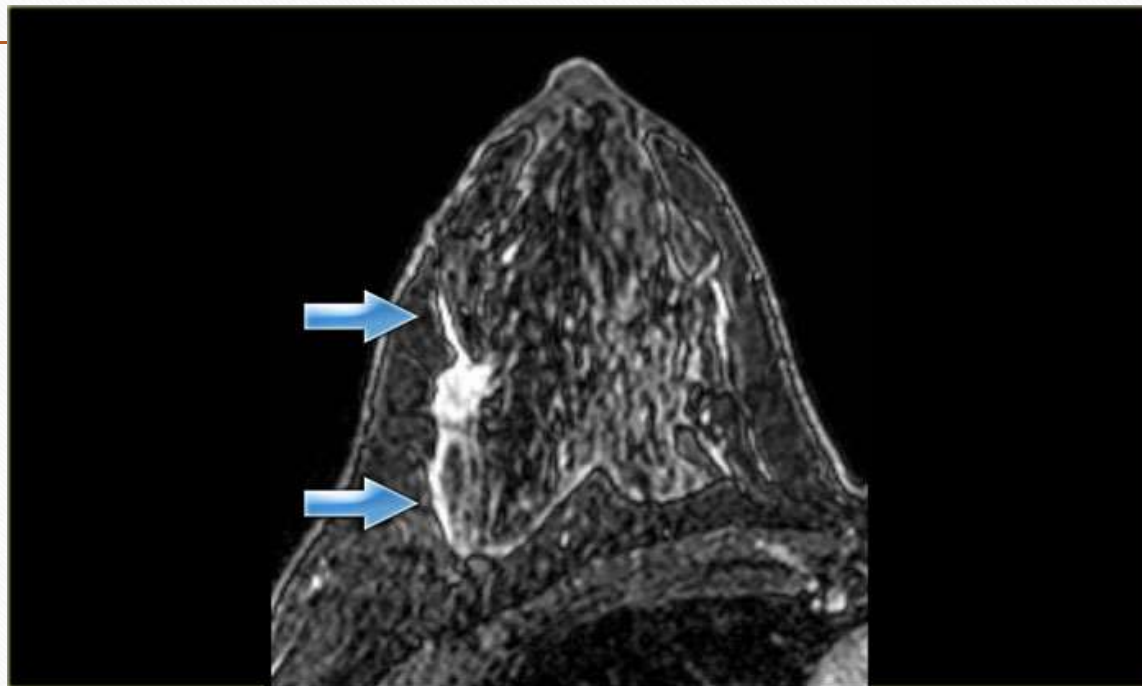




Linear enhancement(stromal fibrosis in this case)



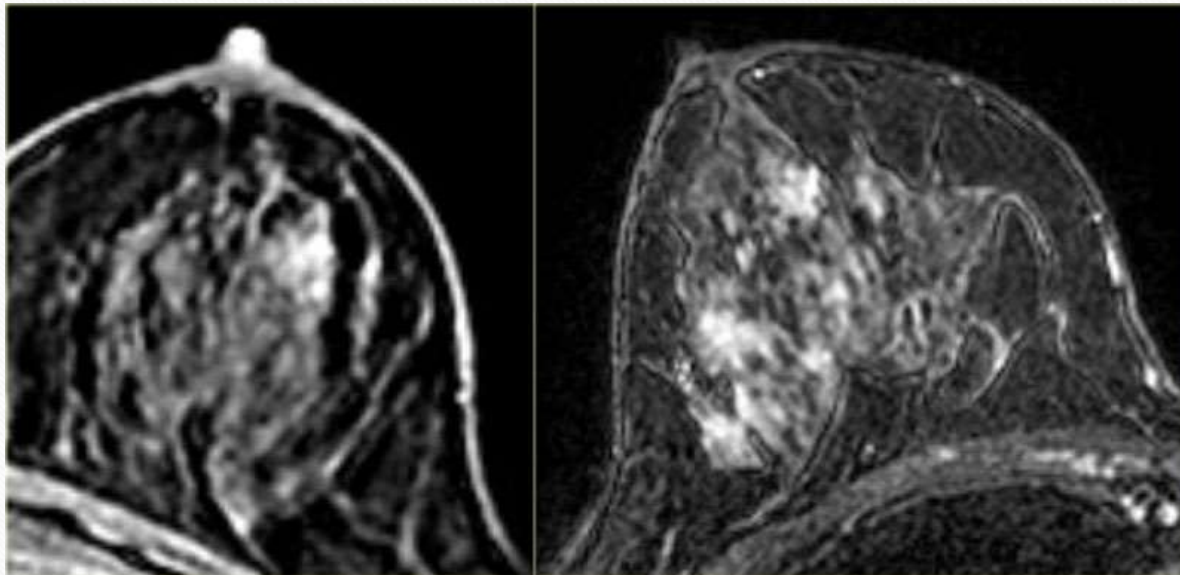
Mass with linear non-mass enhancement(DCIS with IDC)



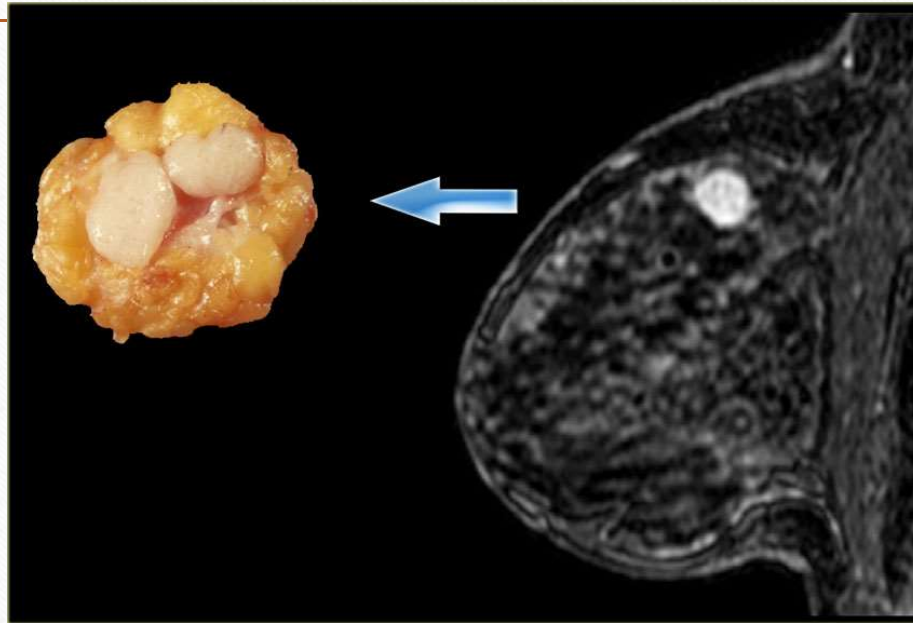


# Clumped enhancement

---



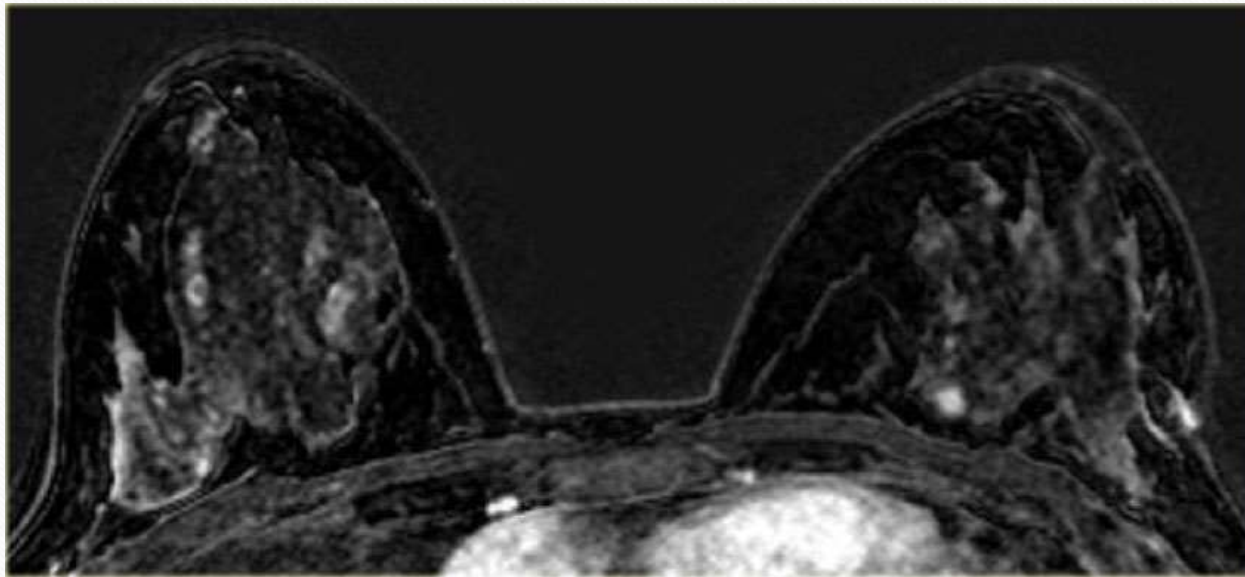
**Fibroadenoma:** Benign morphology/ non-enhancing internal septation/ Curve type 1

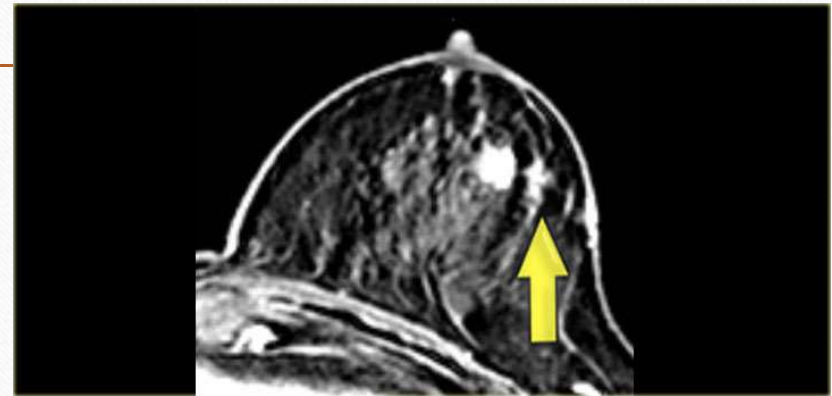
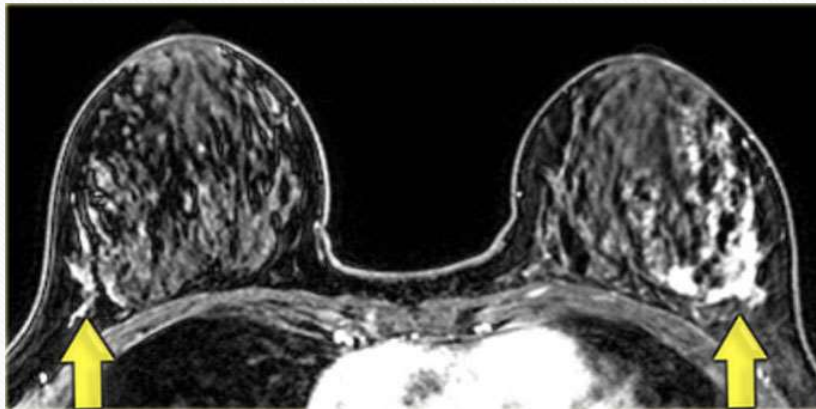




**DCIS:**commonly presented with non-mass enhancement(mostly ductal,segmental and linear forms)

---

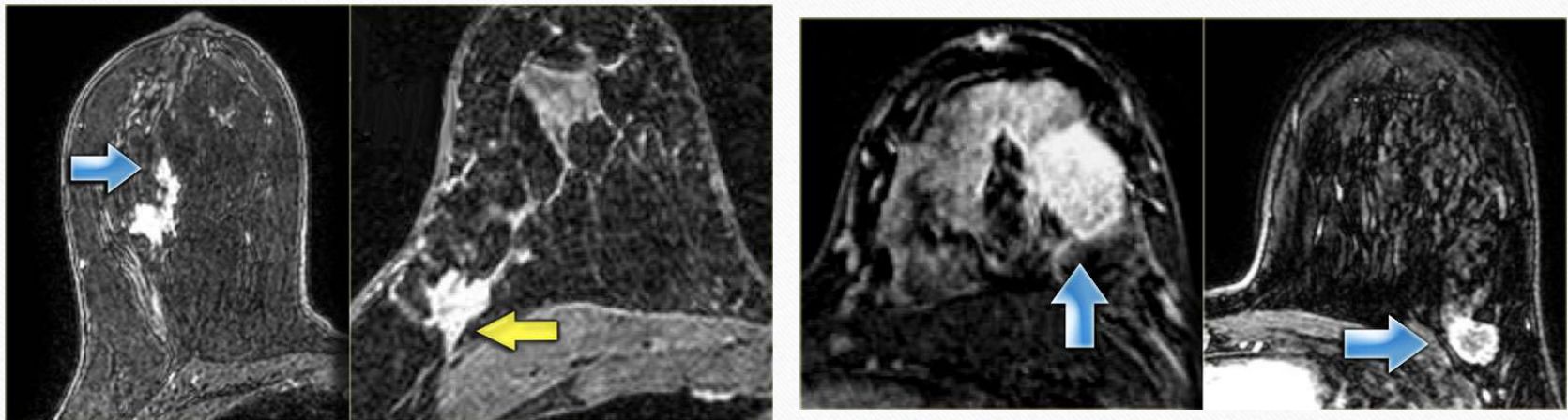






**Invasive Ductal Carcinoma(IDC):**usually presents as a mass lesion with malignant characteristics

---



Thanks for your attention

