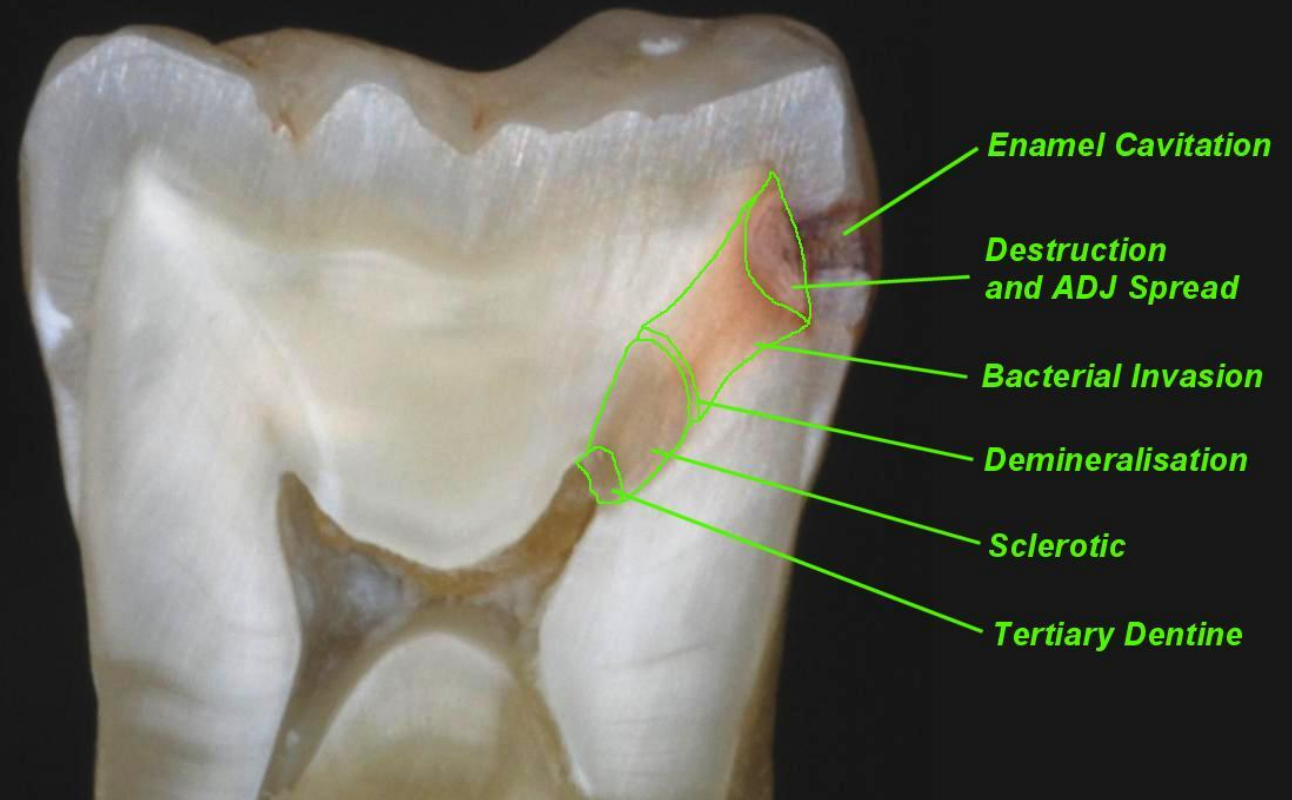


Radiographic Diagnosis Of Dental Caries

Dr. Farnoosh Khaksari

Oral And Maxillofacial Radiologist





View of Distal Surface



BW



PA (parallel)



PA (bisecting angle)



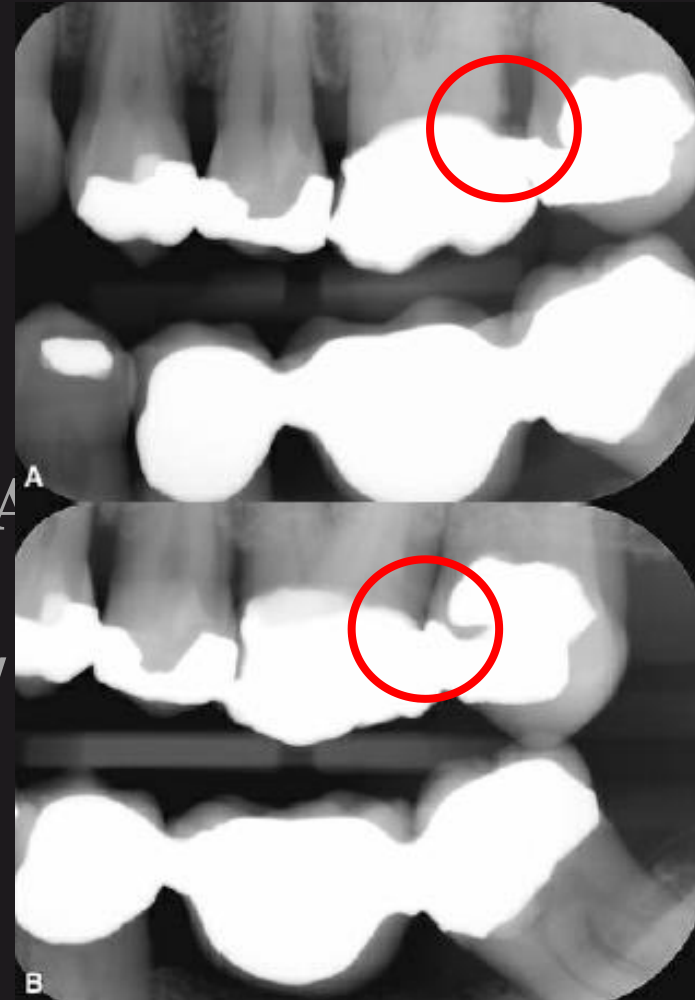
Factors affecting the detection of dental caries:

Two dimensional image

Buccolingual thickness of tooth

Exposure factors \longrightarrow kVp / mAs

X-ray tube angle \longrightarrow vertical /



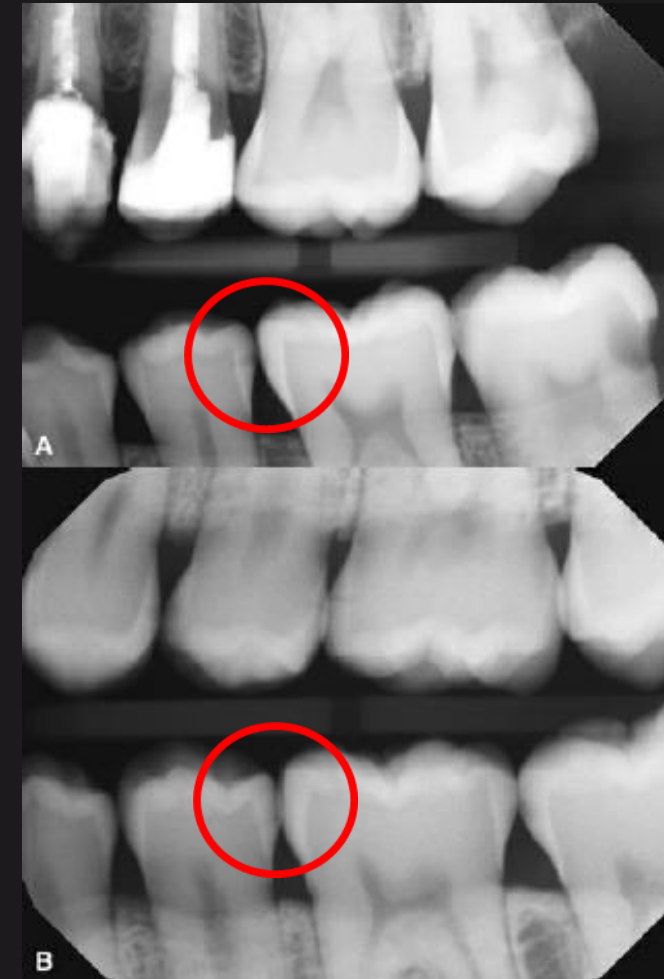
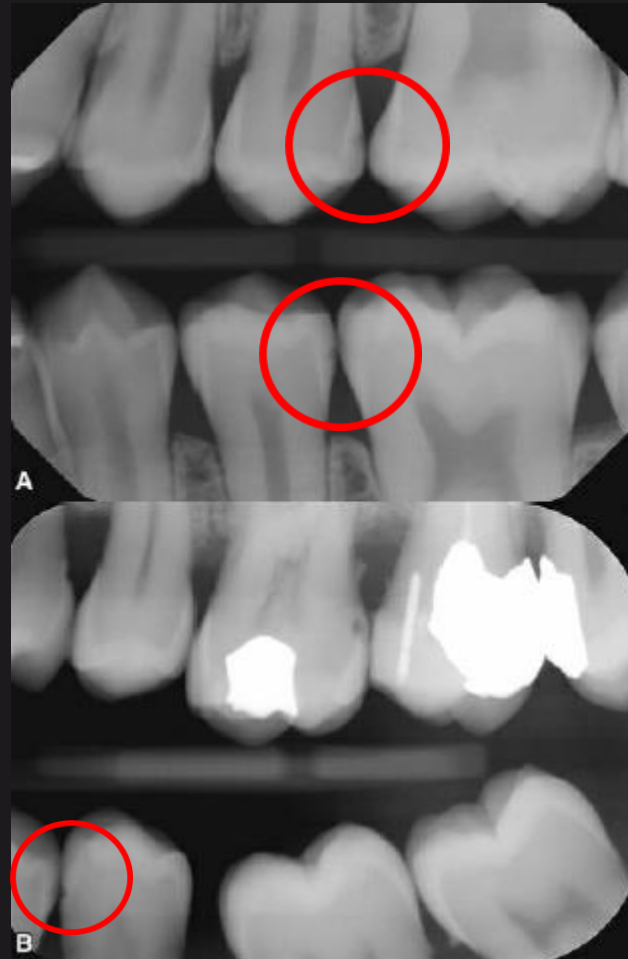
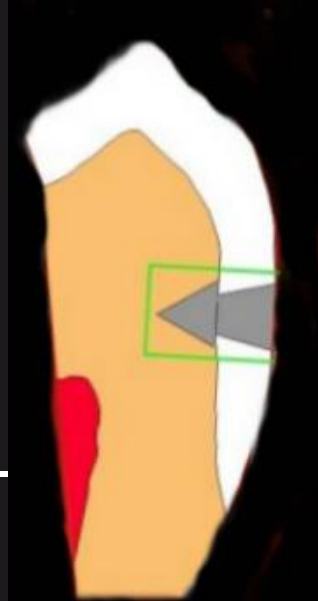
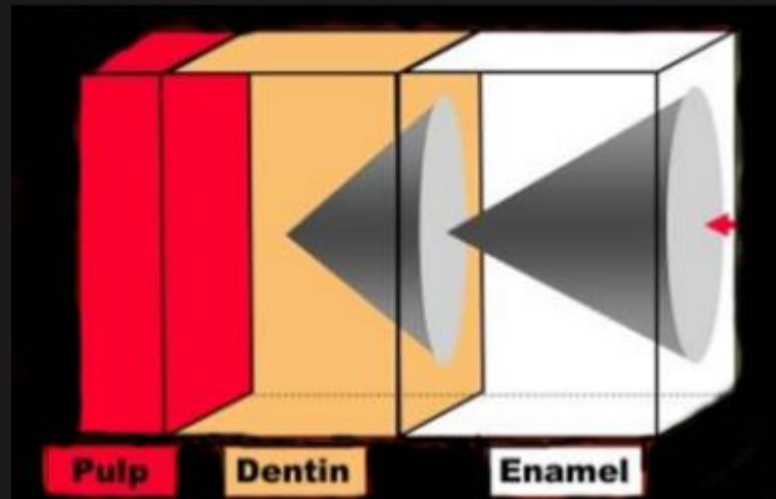
Is the geometry of the images correct or not?

Superimposition of buccal and lingual cusps

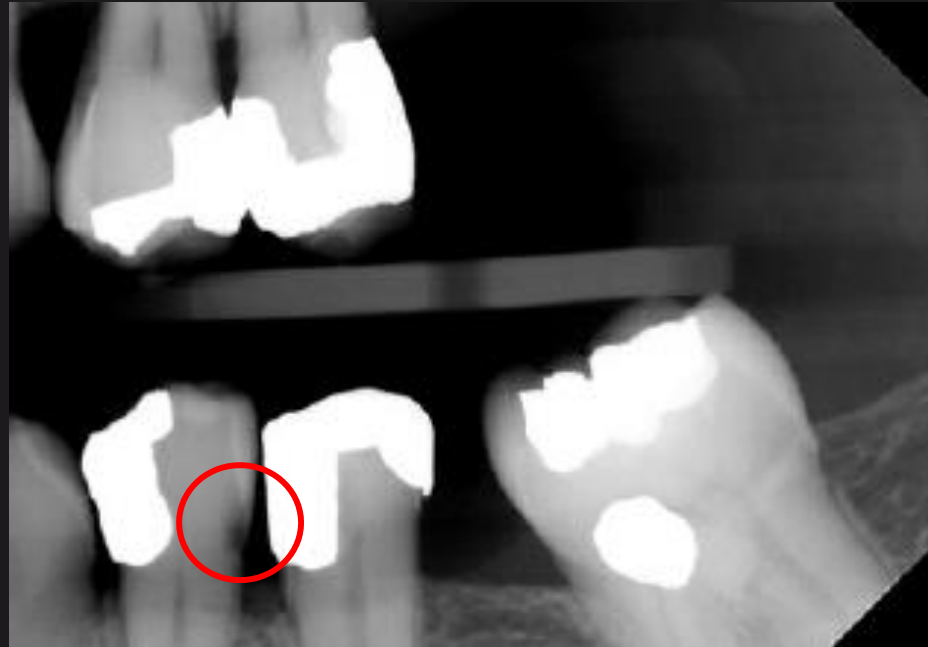
Open interproximal contacts

Superimposition of buccal and lingual alveolar crests

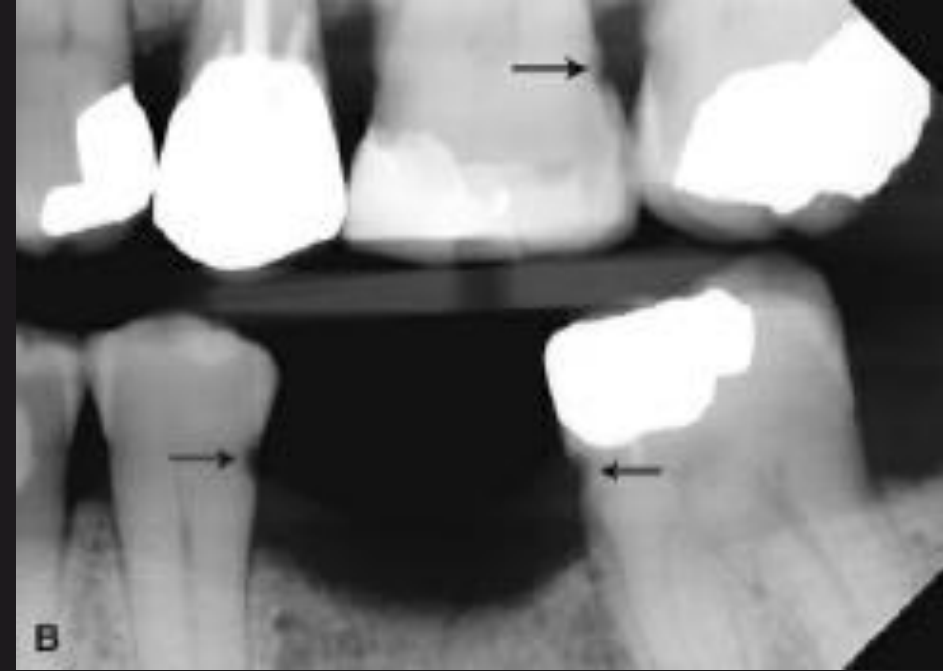
□ *Detection of Carious Lesions* *Proximal Surfaces*




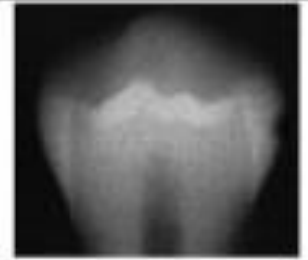

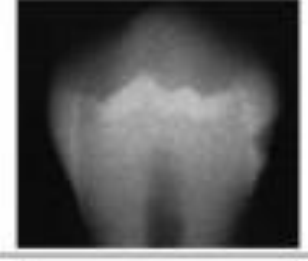




□ *Detection of Carious Lesions* *Proximal Surfaces*



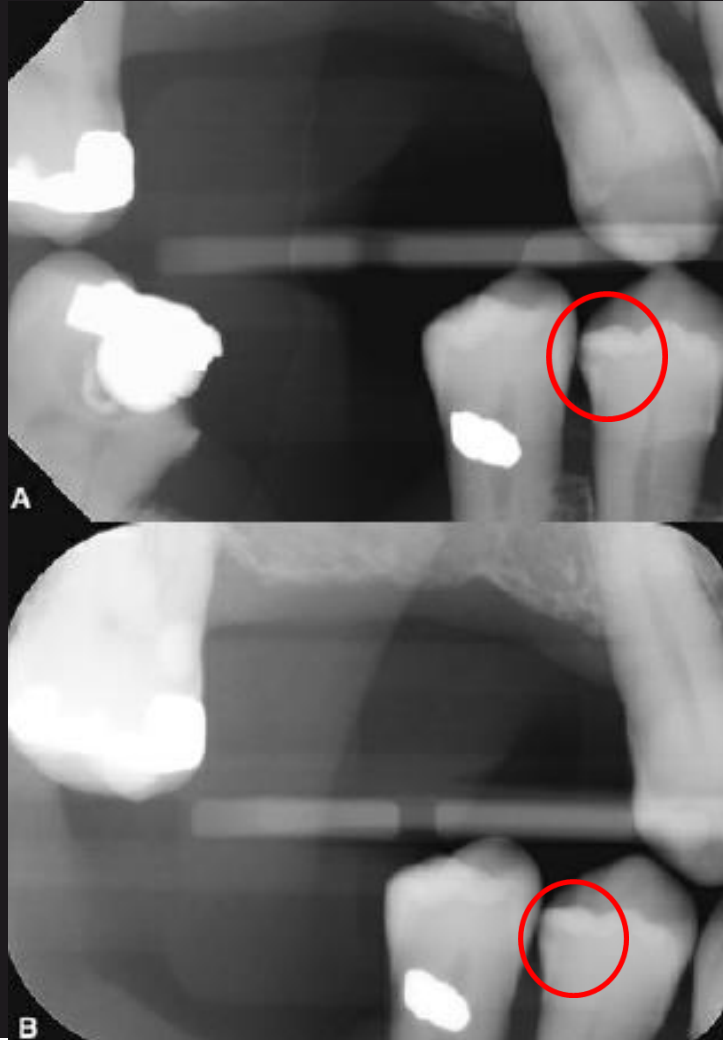
□ *Detection of Carious Lesions*
False-Positive Interpretations
Cervical burnout



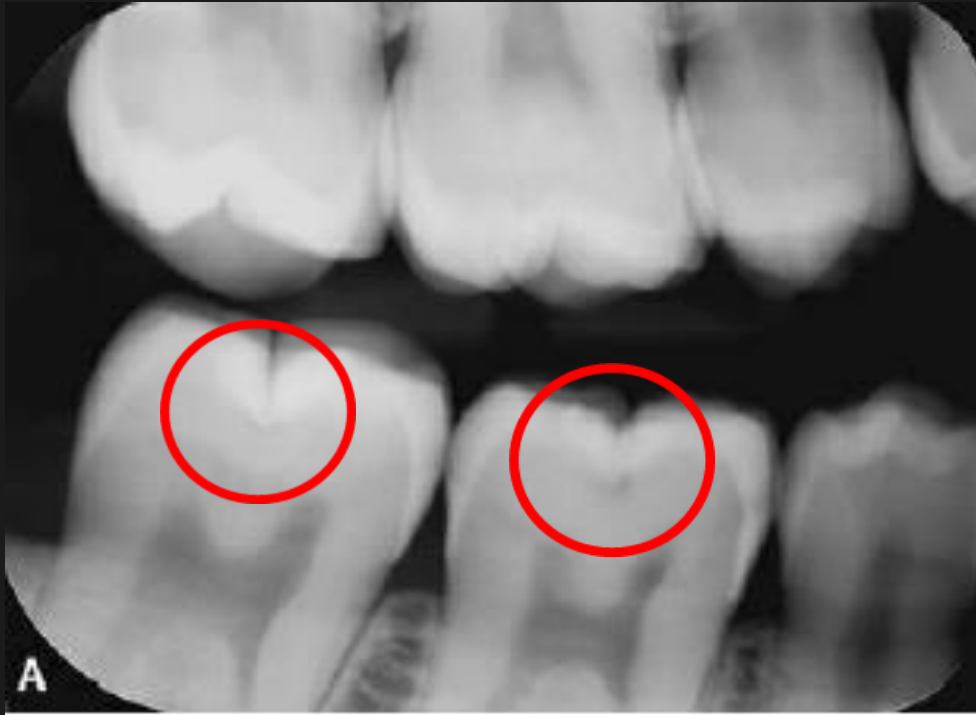
□ *Staging and Cavitation*

Stages	Illustration	Radiographs
Incipient		
Moderate		
Advanced		
Severe		

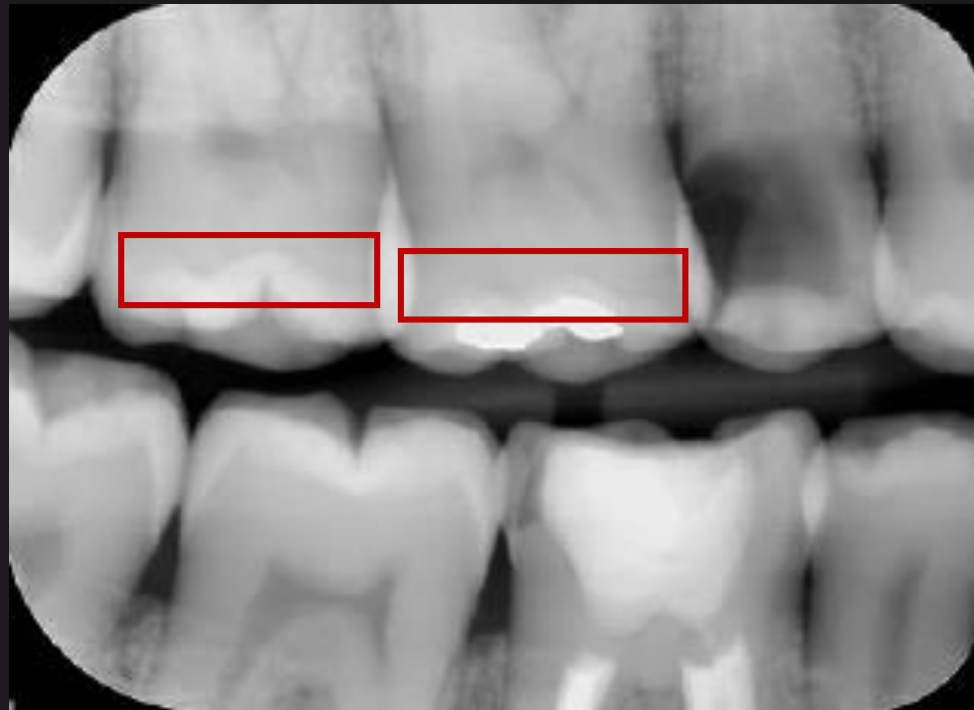
Arrested caries



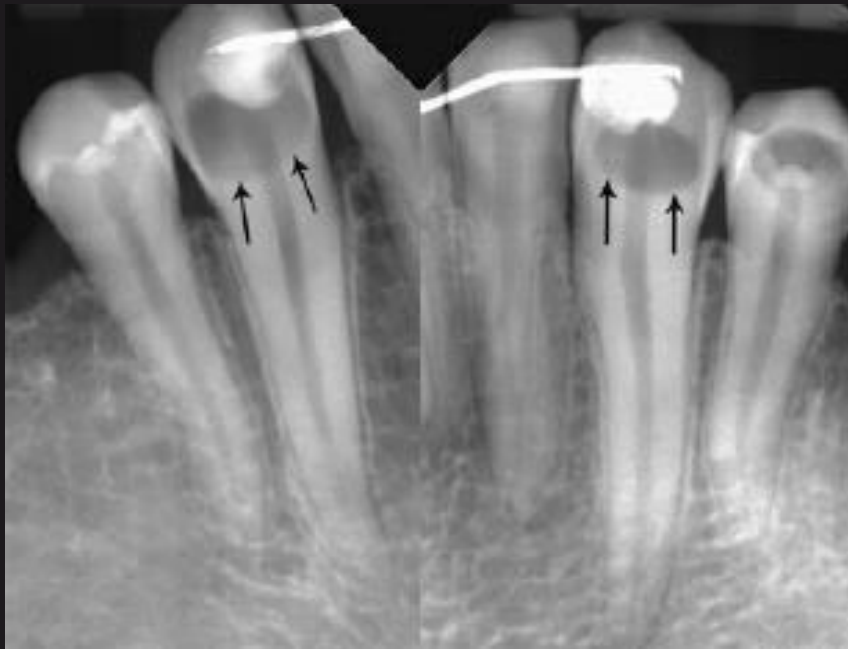
□ *Detection of Carious Lesions* *Occlusal Surfaces*



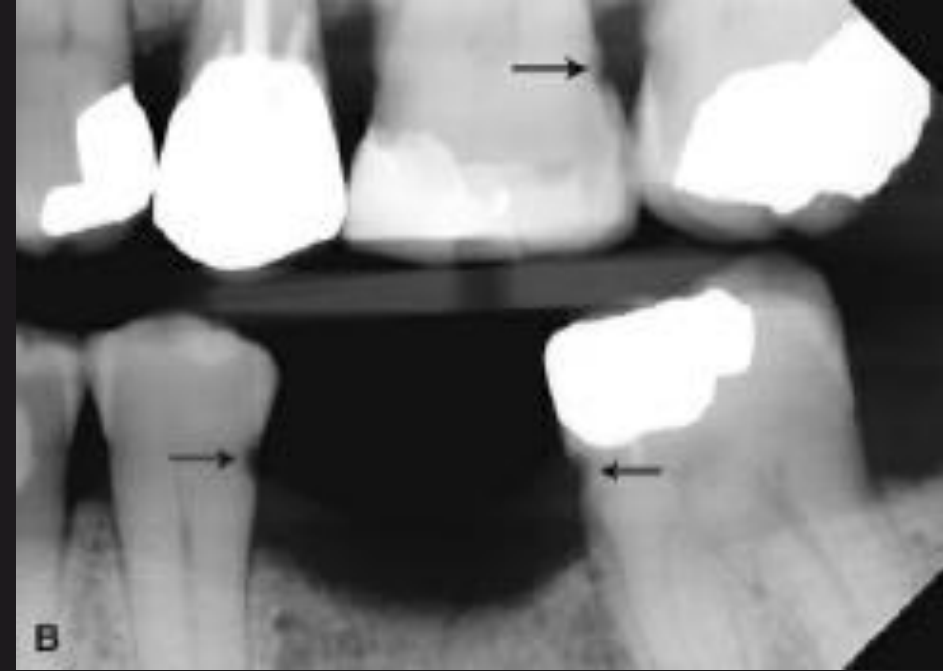
□ *Detection of Carious Lesions*
False-Positive Interpretations
Mach-band effect



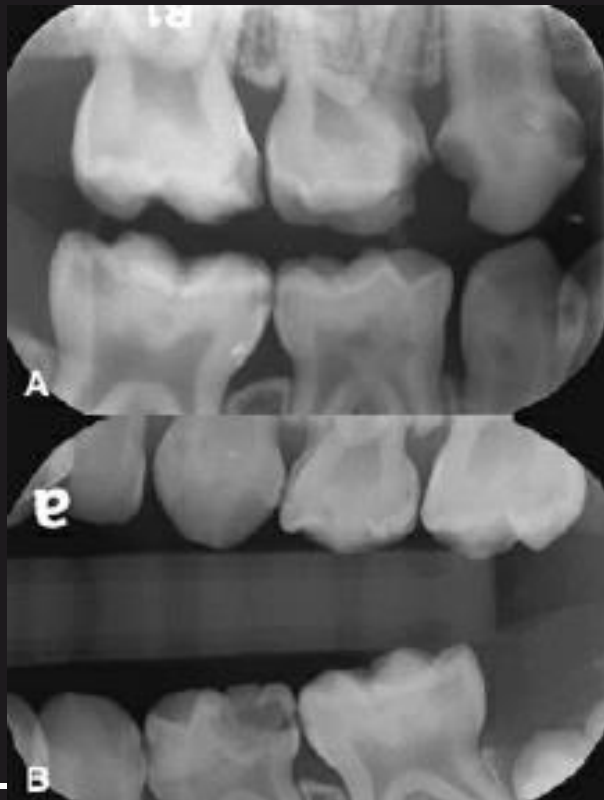
□ *Detection of Carious Lesions* *Buccal and Lingual Surfaces*



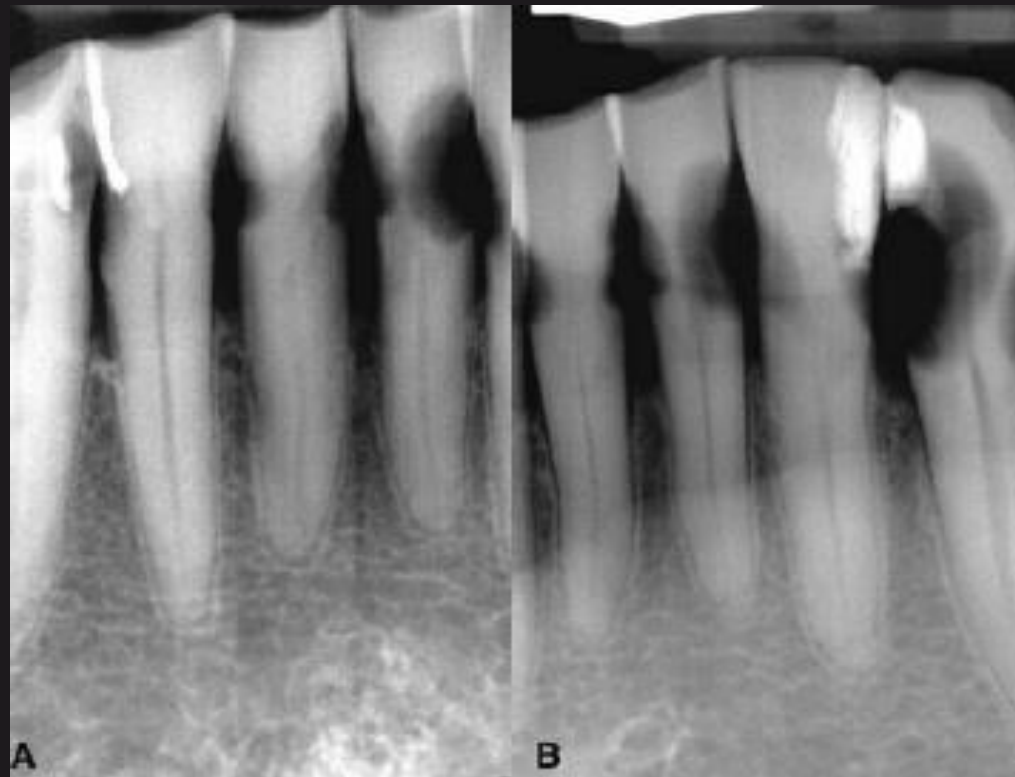
□ *Detection of Carious Lesions* *Root Surfaces*



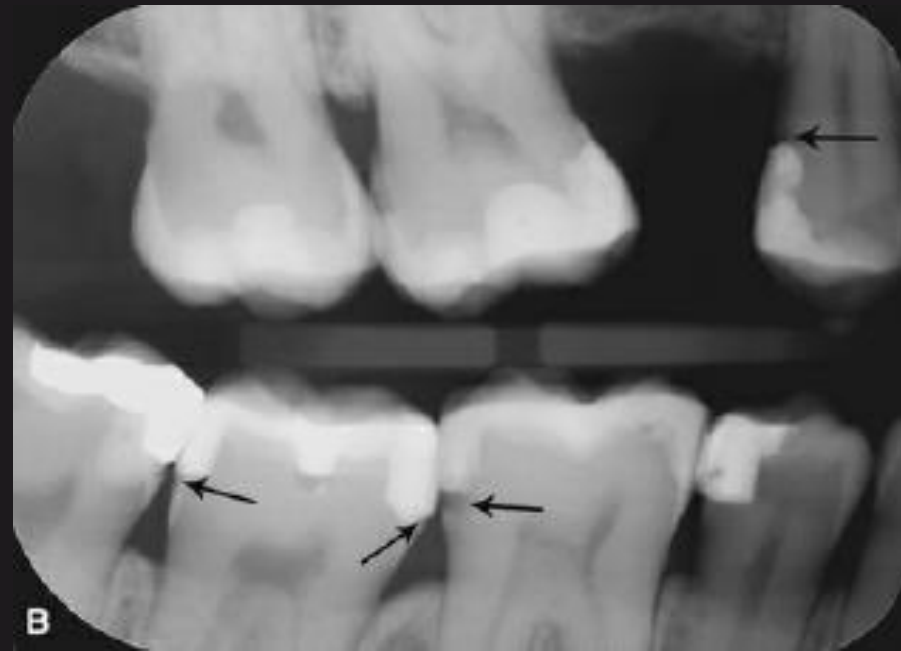
□ *Detection of Carious Lesions* *Rampant Caries*



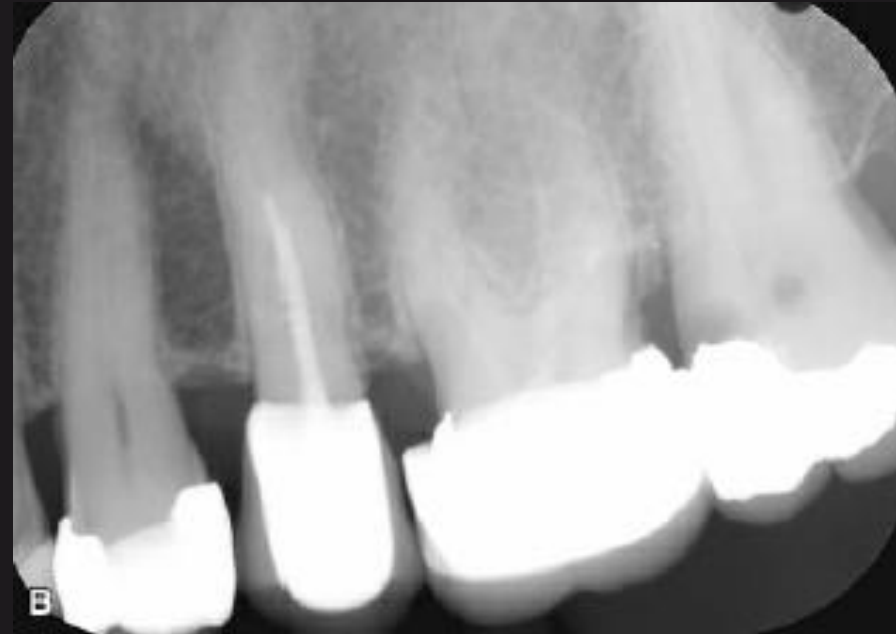
□ *Detection of Carious Lesions*
Rampant Caries
Radiation caries



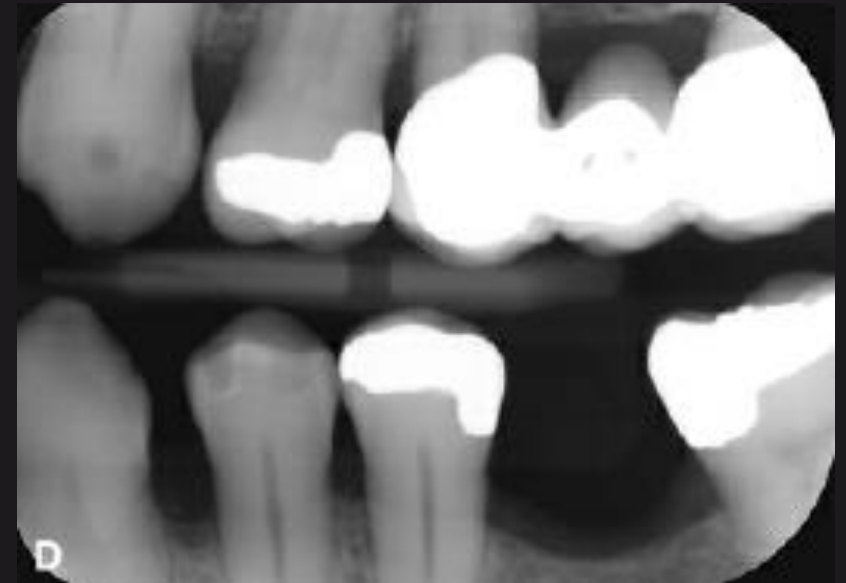
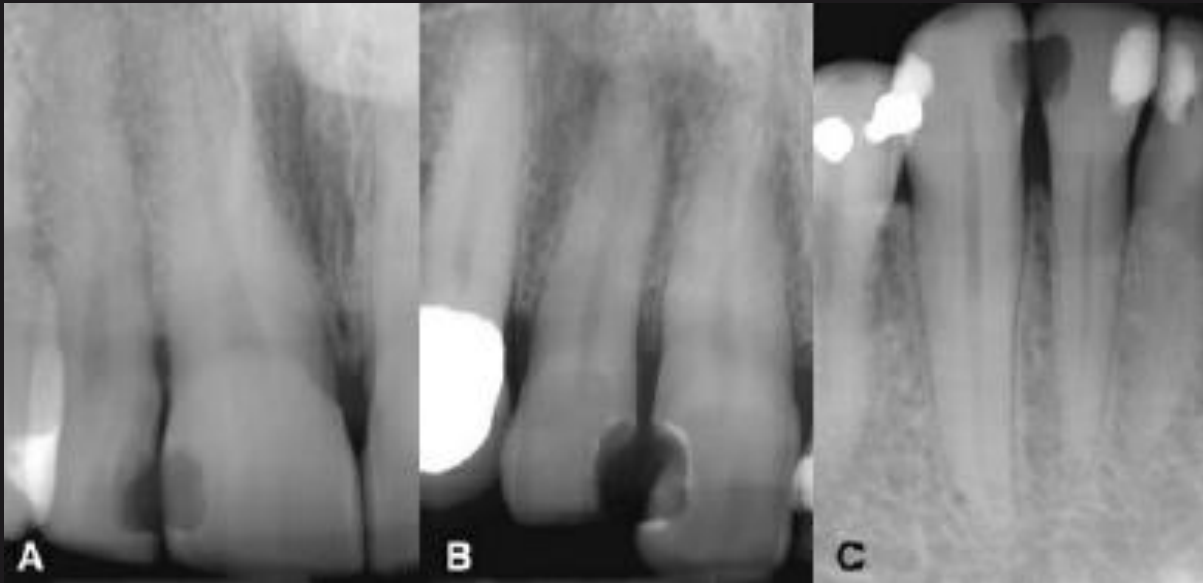
□ *Detection of Carious Lesions* *Recurrent caries*



❑ *Detection of Carious Lesions* *Recurrent caries*



□ *Detection of Carious Lesions* *Dental materials*



موفق باشيد

