

**In the name of God**

# **Diabetes and Cardiovascular diseases**

# Diabetes: A global emergency

Number of people with diabetes worldwide and per region in 2019, 2030 and 2045 (20-79 years)

## Summary

### North America & Caribbean

2045 63 million  
2030 56 million  
2019 48 million  
↑ 33% increase

### South & Central America

2045 49 million  
2030 40 million  
2019 32 million  
↑ 55% increase

### WORLD

2045 700 million  
2030 578 million  
2019 463 million  
↑ 51% increase

### Africa

2045 47 million  
2030 29 million  
2019 19 million  
↑ 143% increase

### Middle East & North Africa

2045 108 million  
2030 76 million  
2019 55 million  
↑ 96% increase

### Europe

2045 68 million  
2030 66 million  
2019 59 million  
↑ 15% increase

### South-East Asia

2045 153 million  
2030 115 million  
2019 88 million  
↑ 74% increase

### Western Pacific

2045 212 million  
2030 197 million  
2019 163 million  
↑ 31% increase

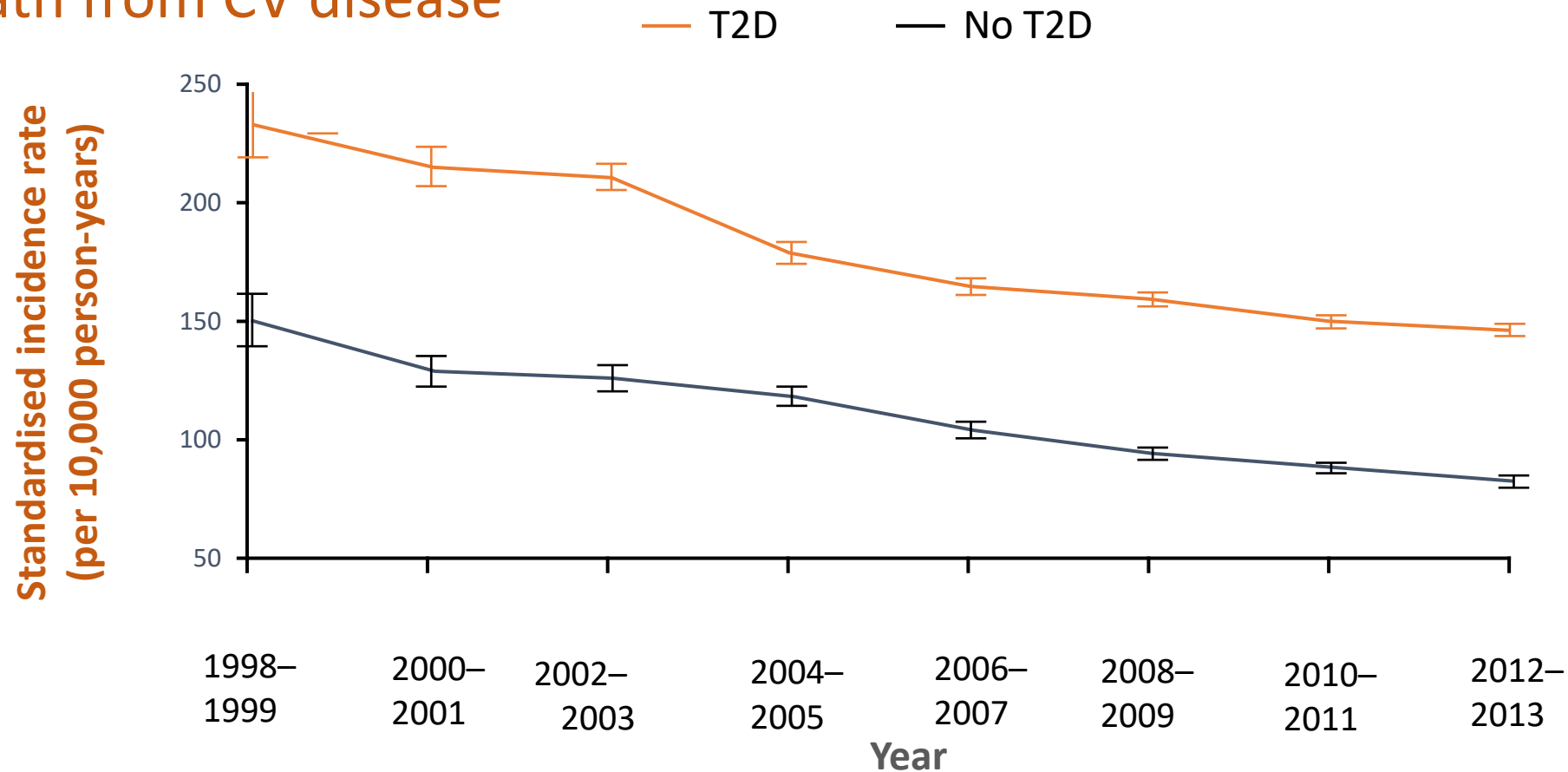
Map 1 Number of people with diabetes worldwide and per IDF Region in 2019, 2030 and 2045 (20-79 years)

**IRAN**  
IDF 2017  
5 million individuals with DM  
Prevalence 8.9%  
SuEFNCD 2011  
11.4% adult population have DM  
35% increase since 2005  
Projection  
By 2030 9.2 million people with DM

**537 million** adults are living with diabetes - 1 in 10.  
predicted to rise to **643 million** by 2030 and  
**783 million** by 2045.(IDF 10<sup>TH</sup> .edition)

Despite improved prognosis with advancing standard of care, patients with T2D remain at increased risk of CV mortality

- Death from CV disease



Data from 457,473 patients with T2D from the Swedish National Diabetes Register CV, cardiovascular; T2D, type 2 diabetes  
Rawshani A *et al.* *N Engl J Med* 2017;376:1407

# CV disease occurs early and is the leading cause of mortality in patients with T2D

---

CV disease can occur  
**10–15 years earlier**  
in patients with diabetes compared  
with those without diabetes<sup>1</sup>



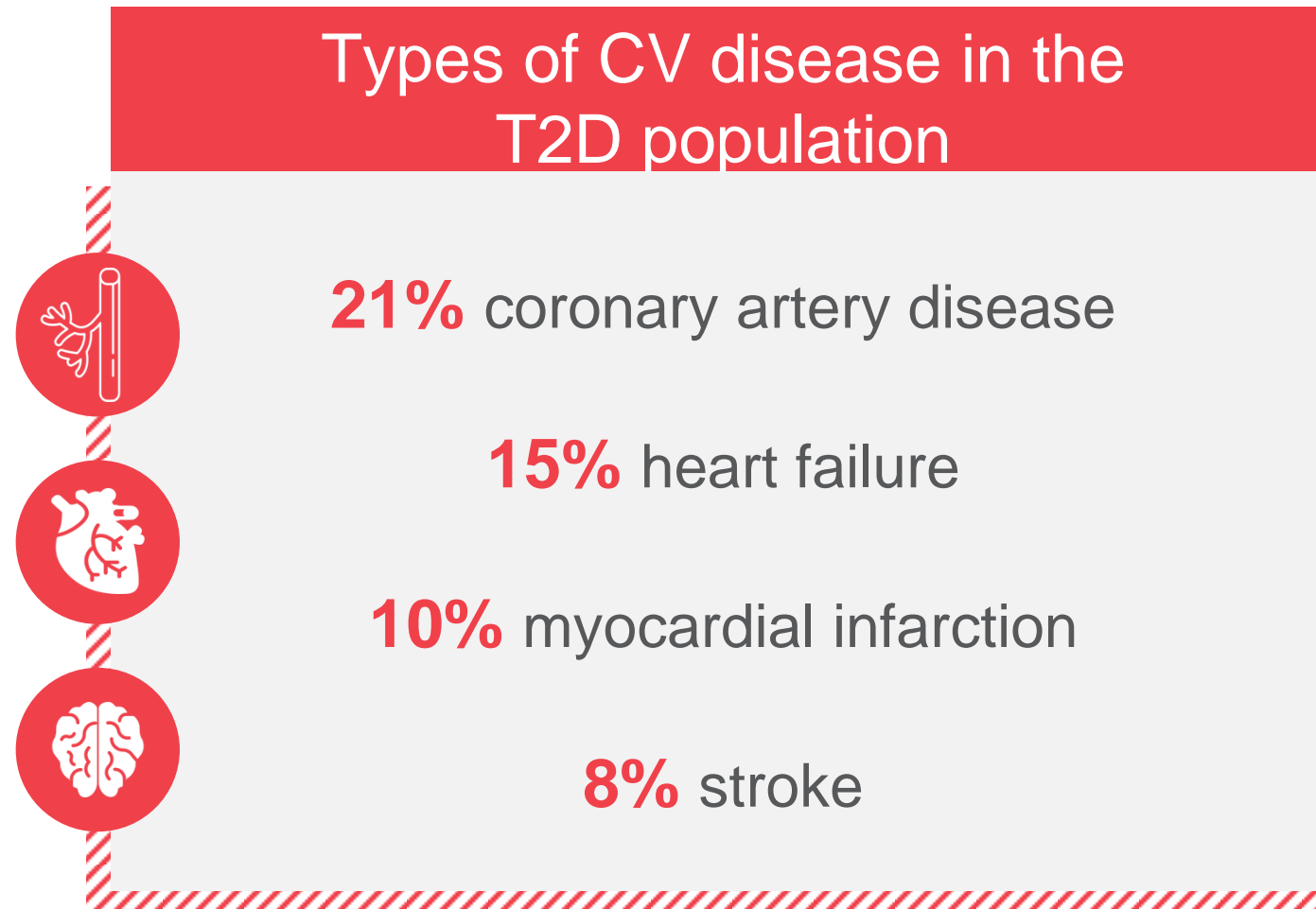
Despite advances in standard  
of care, most patients with T2D  
**die from CV disease**<sup>2</sup>



CV, cardiovascular; T2D, type 2 diabetes

1. Booth GL *et al. Lancet* 2006;368:29; 2. Morrish NJ *et al. Diabetologia* 2001;44(Suppl 2):S14

# CV disease can manifest as atherosclerotic events, arterial disease or heart failure





**Cardioprotection** is a **priority** consideration for patients with T2D